



University of
Nottingham

UK | CHINA | MALAYSIA

Axholme: Place-Names in the Marsh

Kathryn Bullen

BA, PGCE, MA

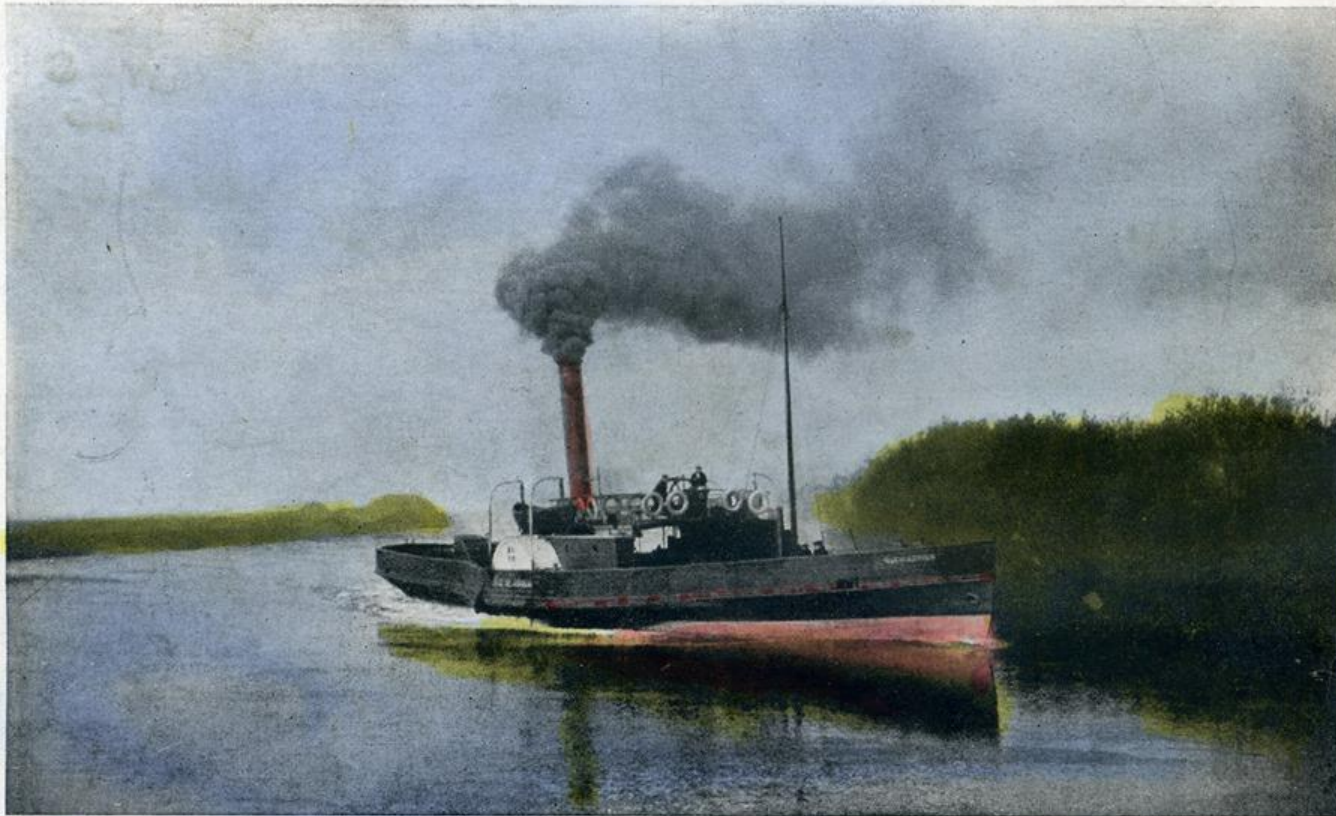


Midlands4Cities
Doctoral Training Partnership
Birmingham Coventry Leicester Nottingham



Arts and
Humanities
Research Council

A journey into bog and moor



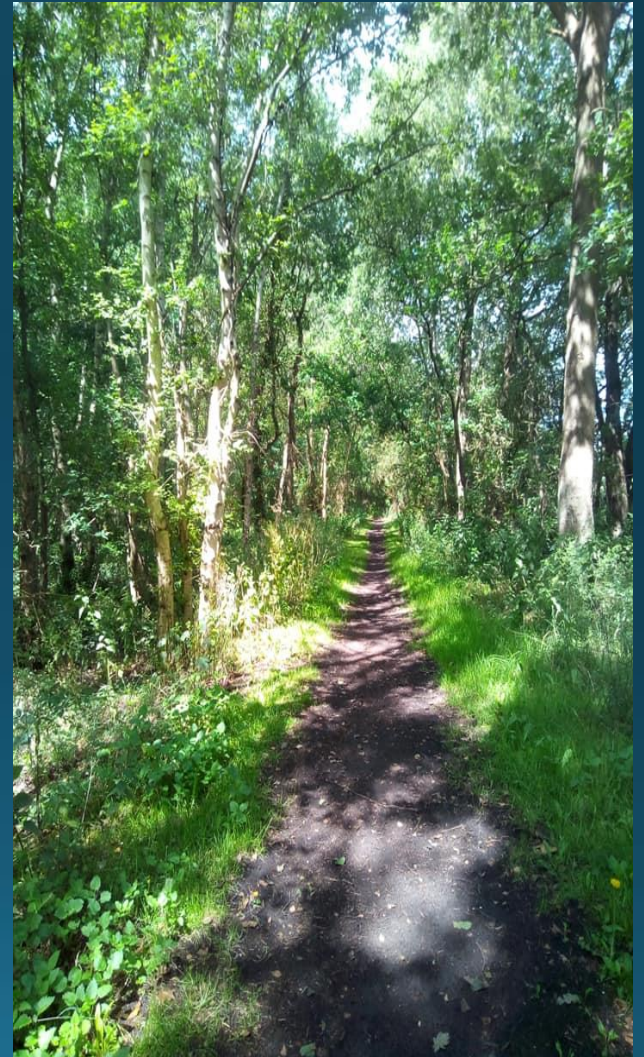
BELTON, PRINTER, GAINSBOROUGH.

S.S. ISLE OF AXHOLME.

106

On our journey today we will...

1. Explore background and research aims.
2. Demonstrate evidence of watery landscape from place-names.
3. Ask how the past can help manage future challenges.



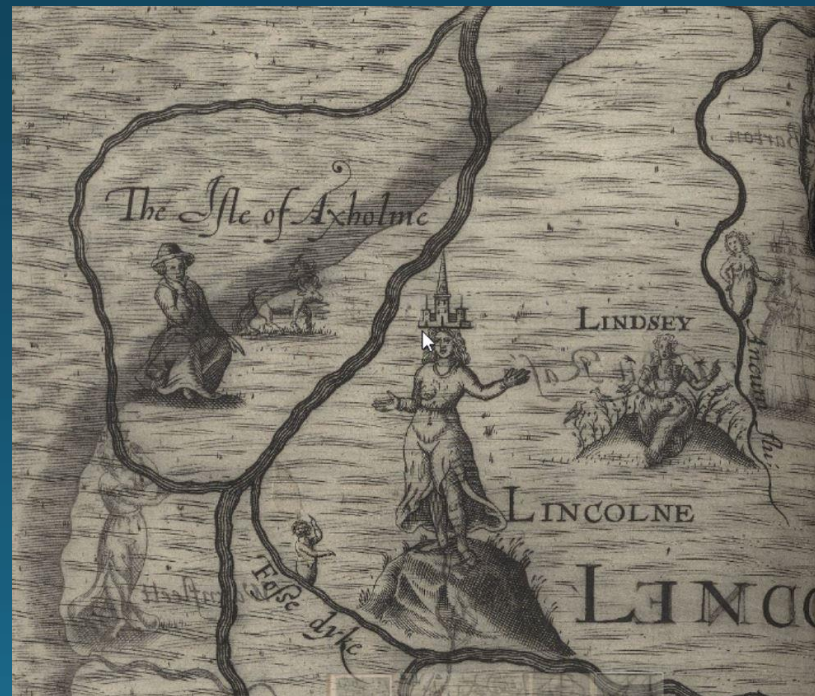
Isle of Axholme - background



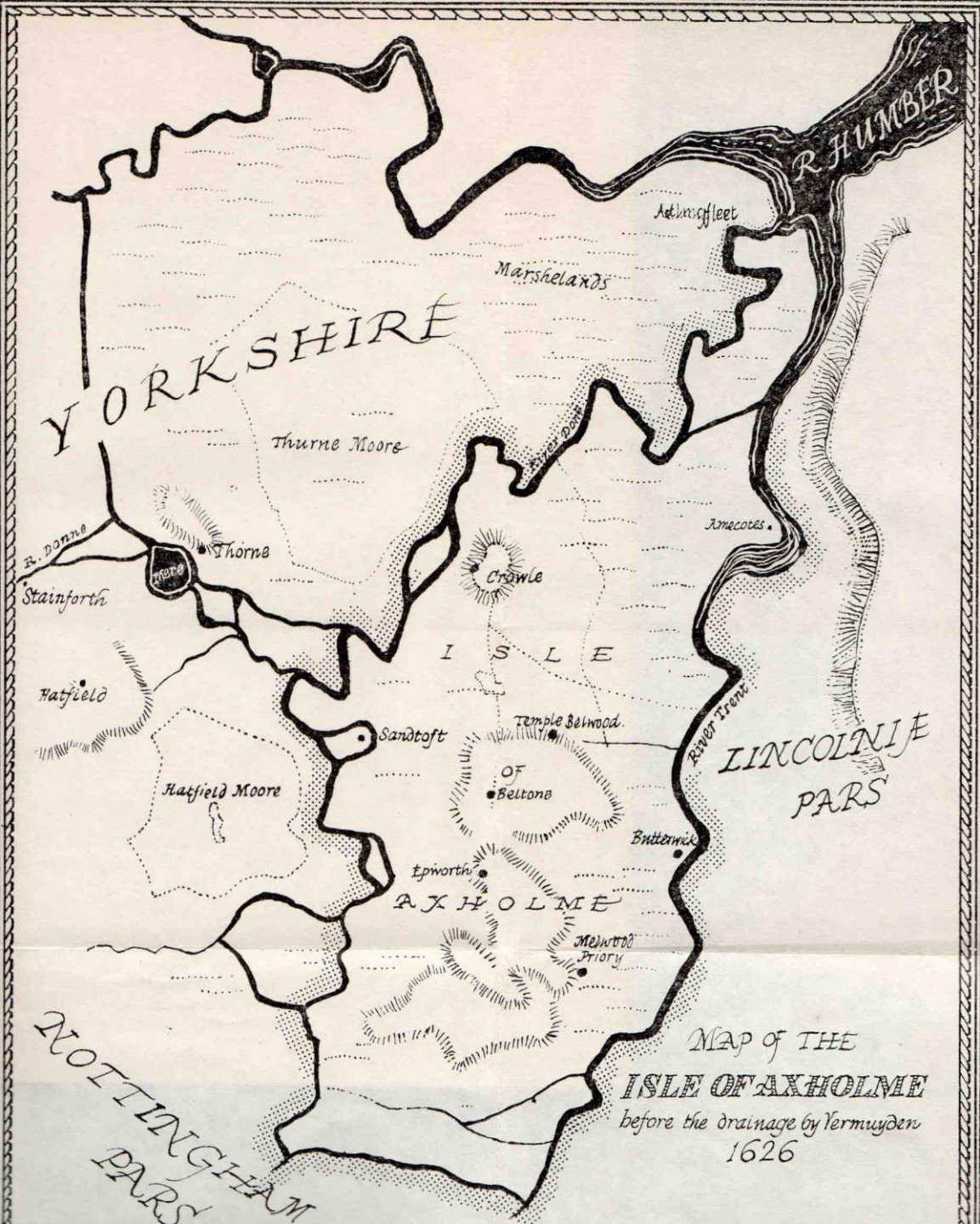
- The only part of Lincolnshire west of the River Trent.
- Originally bounded by the River Don, River Torne, River Trent and River Idle.
- Axholme is defined as 'the island by Haxey', from Old Norse *holmr* 'island, water-meadow'.

So Nature, the cleere Trent doth fortunatly lay,
To ward me on the West, though farther I extend,
And in my larger bounds doe largely comprehend
Full Axholme, (which those neere, the fertile doe instile)
Which Idle, Don, and Trent, imbracing make an Isle.

Drayton, *Poly-Olbion*, Part 2, Song 25, p.112, lines 324-328
(1622)



<http://poly-olbion.exeter.ac.uk/the-text>
The map is courtesy of the
Folger Shakespeare Library
(CC BY-NC 3.0)



YORKSHIRE

R HUMBER

Actonfleet

Marshlands

Thurne Moore

R. Donne

Thorne

Stainforth

Crawle

Amcotes

I S L E

Hatfield

Temple Belwood

LINCOLN^E
PARS

Sandtoft

OF
Belton

Butterick

Hatfield Moore

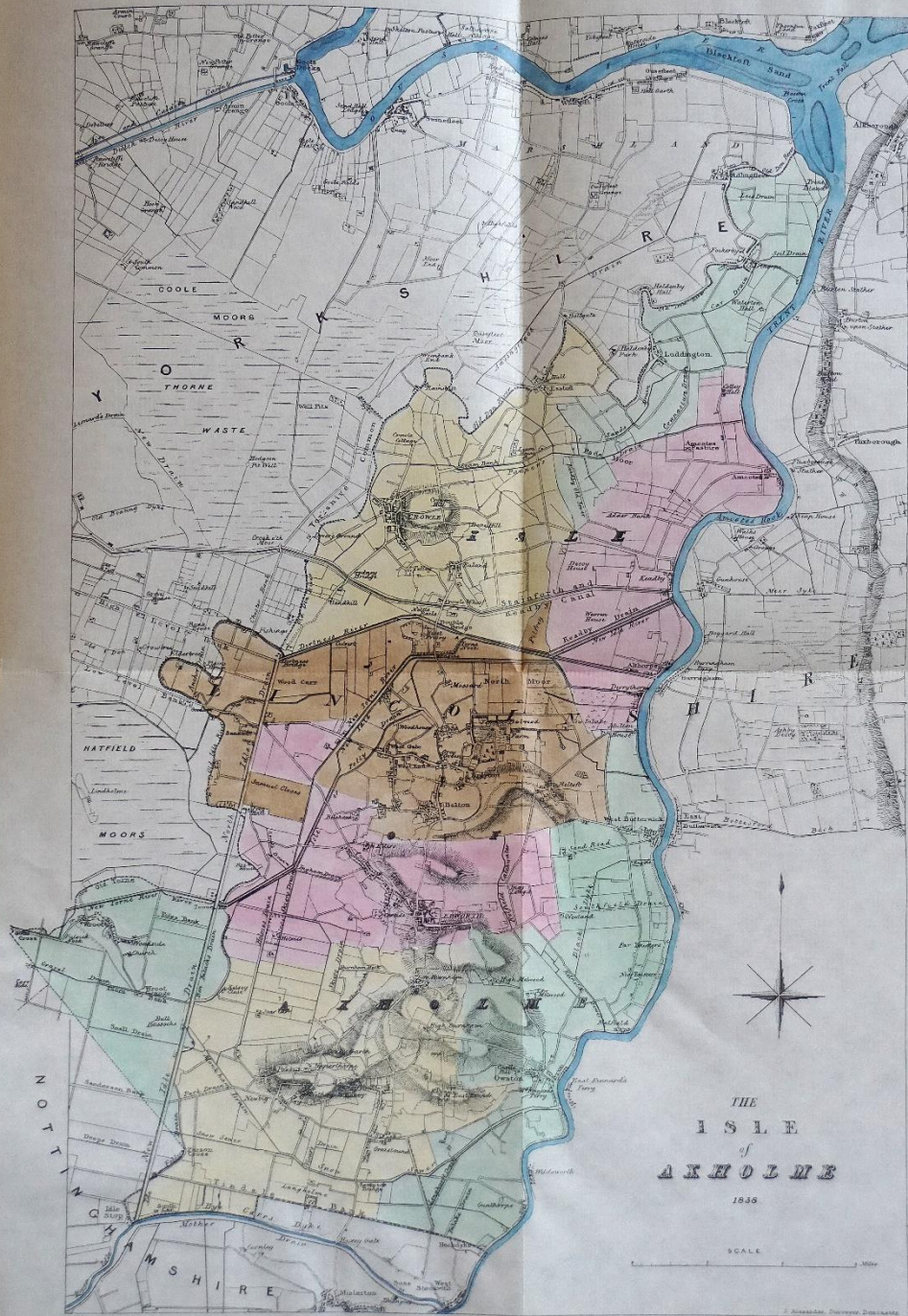
AXHOLME

Epworth

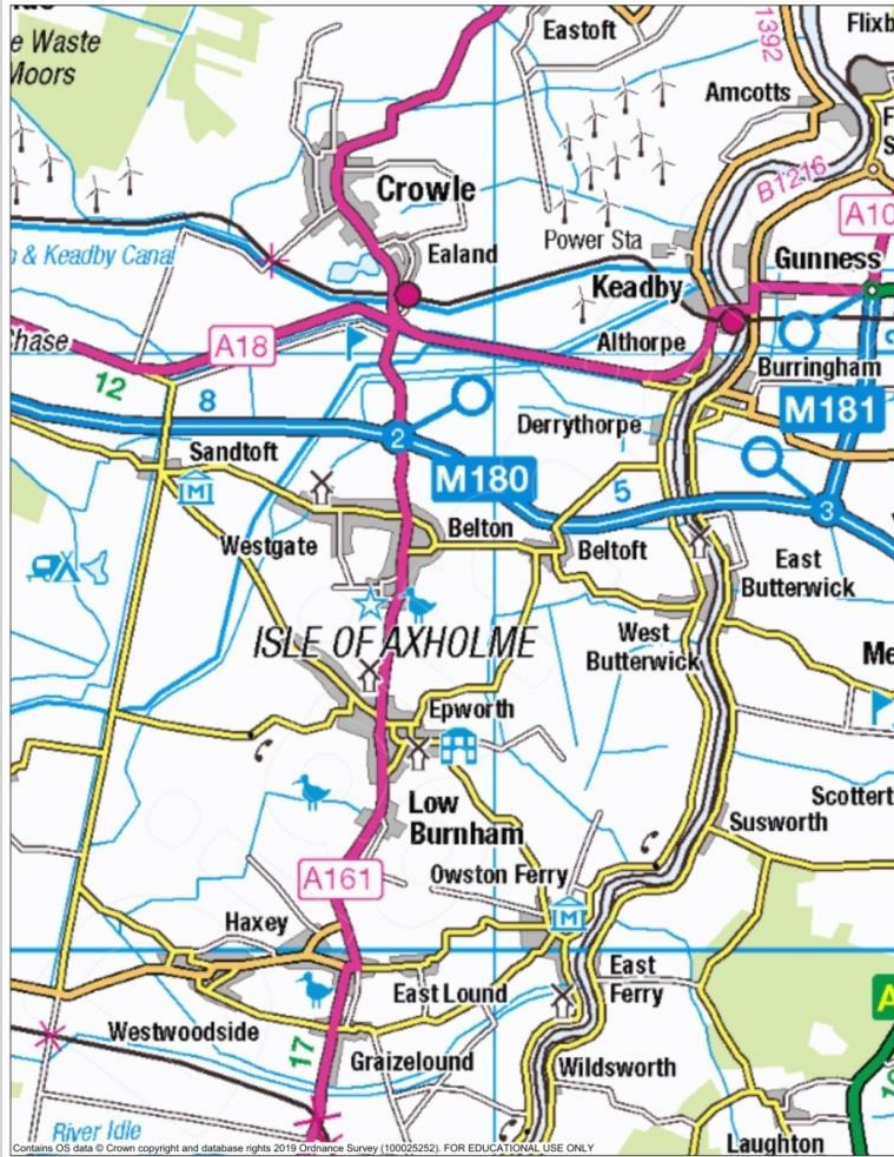
Melwood
Priory

NOTTINGHAM
PARS

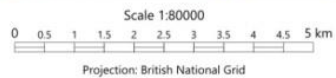
MAP OF THE
ISLE OF AXHOLME
before the drainage by Vermuyden
1626



Isle of Axholme



Contains OS data © Crown copyright and database rights 2019 Ordnance Survey (100025252). FOR EDUCATIONAL USE ONLY



Aug 19, 2019 17:00
Kathryn Bullen
University of Nottingham

1:95000 Digimap, 'Axholme overview' © Crown Copyright and Landmark Information Group Limited (2020). All rights reserved.

Aims of my research

1. Discover what place-names in the Isle of Axholme can tell us.
2. Collect historical forms.
3. Benefit the local community and environmental agencies.
4. Provide material for a publishable volume of the English Place-Name Society.



THE PLACE - NAMES OF
LINCOLNSHIRE

BY

KENNETH CAMERON and
JOHN INSLEY

in collaboration with

JEAN CAMERON

THE SURVEY OF ENGLISH PLACE-NAMES
VOLUME LXXXV

PART SEVEN
LAWRESS WAPENTAKE

ENGLISH PLACE-NAME SOCIETY

Evidence of watery landscape

- ON **ey** 'island' - Haxey
- ME **flasse** 'swamp' - Flash Close
- ON **kjarr** 'brushwood, marsh' - Thatch Carr Bank



- ON *mýrr* 'swamp' - Paddock Mire
- OE *slōh* 'bog, marsh' - Slough Close
- OE *snæp* 'a boggy piece of land' - Snape Paddocks



Plants in the watery landscape

OE **hrēod** 'reed, rush' - Reeds Lane

ON **stǫrr** 'sedge, bent grass' - Star Carr

OE **secg** 'sedge, reed, rush' - Sedge Hole Close



ME gail 'bog myrtle' - The Gales

ON lyng 'heather' - Lings



Li Dial **rate** from ME **retten** 'to soak (flax, hemp)' –
The Rates

OE **hænep** 'land on which hemp was grown or stored'
Hempland (recurrent)

OE **lin** 'flax'- Lincroft



Landscape management

OE **dīc** 'ditch' - Common Dyke

ME **drein** 'drain' - Engine Drain

ME **seuer** 'trench or ditch used for drainage' - Snow
Sewer



ME turbarie 'a place where peat is dug' - Epworth Turbary, Haxey Turbary



Modern English **warp** 'to cover (land), by natural or artificial flooding, with a deposit of alluvial soil' -
North Moor Warping Drain



Current conundrum: what is a 'beave'?

- Not listed in Oxford English Dictionary.
- Mentioned several times in the 1803 Haxey Inclosure Award:

One other Private Carriage and Drift Road of various breadths called North Beaves Road beginning at the New Idle Bank at the north corner of a Beave belonging to William Bradbury and thence extending in a southward direction between the Main Drain and Old Idle Beaves (crossing the Doncaster Road) to Snow Sewer

One other Private Carriage and Drift Road of the breadth of sixteen feet called Guelphs Road beginning at the New Idle Bank and thence extending over the late Commons in a westward direction and on the north side of an Allotment No.427 made to Thomas Wright to a Beave at Old Idle

Current conundrum: what is a 'beave'?

- 1841 court roll from the Manor of Epworth: 'parcels of meadow or pasture called a Beave or Fishing, in Epworth'.
- Court of Sewers at Blyth 1756: 'remove all ye Beeves, Sand Beds, and all other impediments and obstructions...'

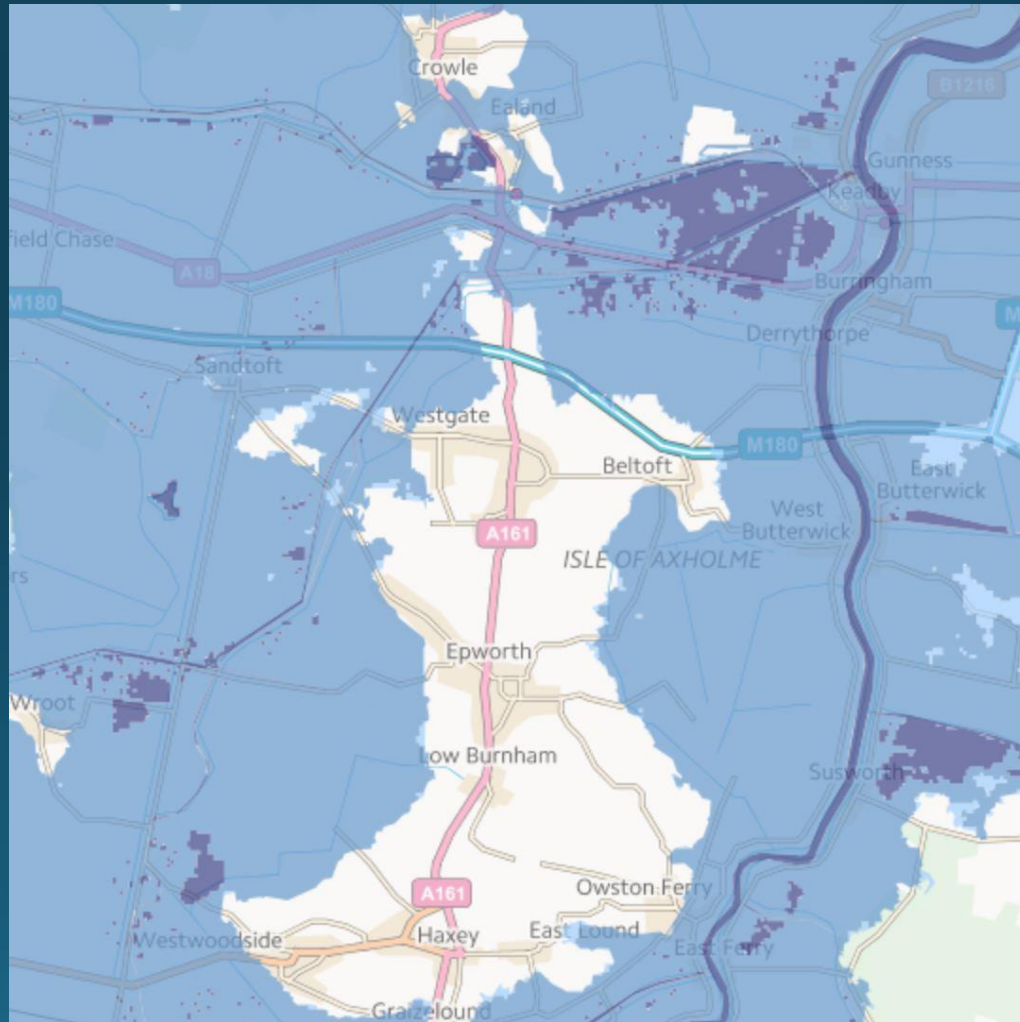


How does what we know of the past help
manage future challenges?

Research supports the Environment Agency strategy for Axholme, focusing on sustainability and making spaces for water.



Provides knowledge of the relationship between the past and possible changes back to a more watery landscape in the future...



Wider context - community



Hope you enjoyed the journey.
Thanks for listening!



Sources and Bibliography

- K. Cameron, *A Dictionary of Lincolnshire Place-Names*, Nottingham, 1998
- V. Cory, *Hatfield and Axholme, An Historical Review*, Ely, 1985
- Digimaps: <https://digimap.edina.ac.uk/>
- G. Dunston, *The Rivers of Axholme*, London, 1909
- Environment Agency, *Isle of Axholme Flood Risk Management Strategy, Environmental Report, Non-Technical Summary*, Bristol, 2011
- S. R. Garner, *The Historic Boundaries of Axholme*, Epworth, 2003
- J. Hamilton, *The Manuscript in the Red Box*, London, 1903
- R. Mabey, *Flora Britannica*, London, 1996
- Poly-Olbion: <http://poly-olbion.exeter.ac.uk/>
- W. B. Stonehouse, *The History and Topography of the Isle of Axholme*, London, 1839
- L. Toulmin Smith (ed.), *The Itinerary of John Leland*, Vol. 1, London, 1907
- V. Watts, *The Cambridge Dictionary of English Place-Names*, Cambridge, 2004
- W. White, *Eastern England from the Thames to the Humber*, Volume II, London, 1865

All photographs © Kathryn Bullen 2020



University of
Nottingham

UK | CHINA | MALAYSIA

kathryn.bullen@
nottingham.ac.uk



Midlands4Cities
Doctoral Training Partnership
Birmingham Coventry Leicester Nottingham



Arts and
Humanities
Research Council