

# Is Misdon in Devon a really ‘misty’ place?

Masaya Takuma



## Misdon

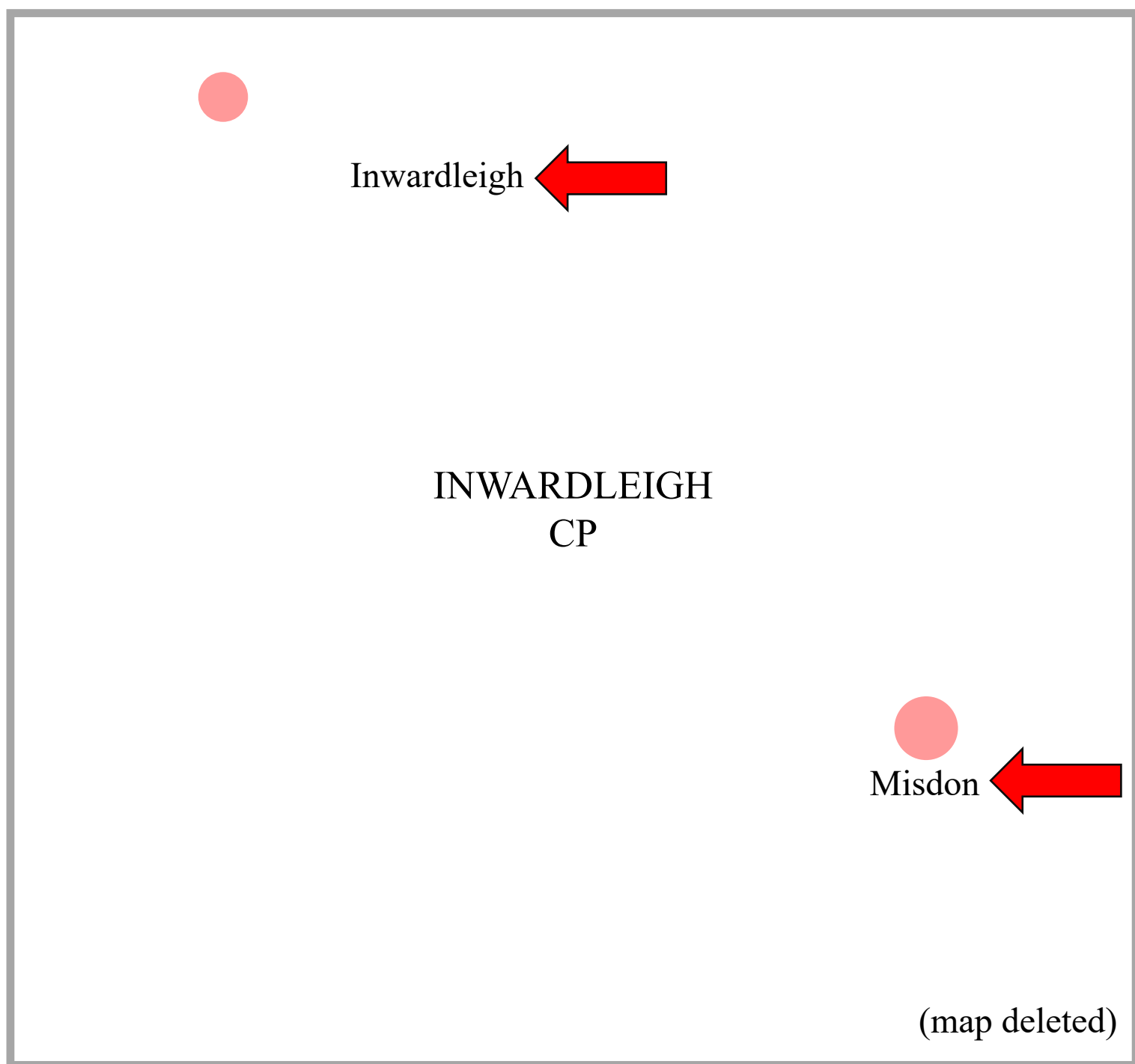
on a gentle slope of a shallow  
north-facing valley

## Inwardleigh

parish church, St Petroc  
to the northwest of Misdon

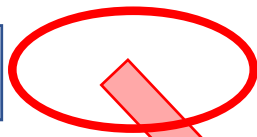
## Cosdon Hill

one of the highest peaks of  
North Dartmoor  
to the southeast of Misdon



(map deleted)

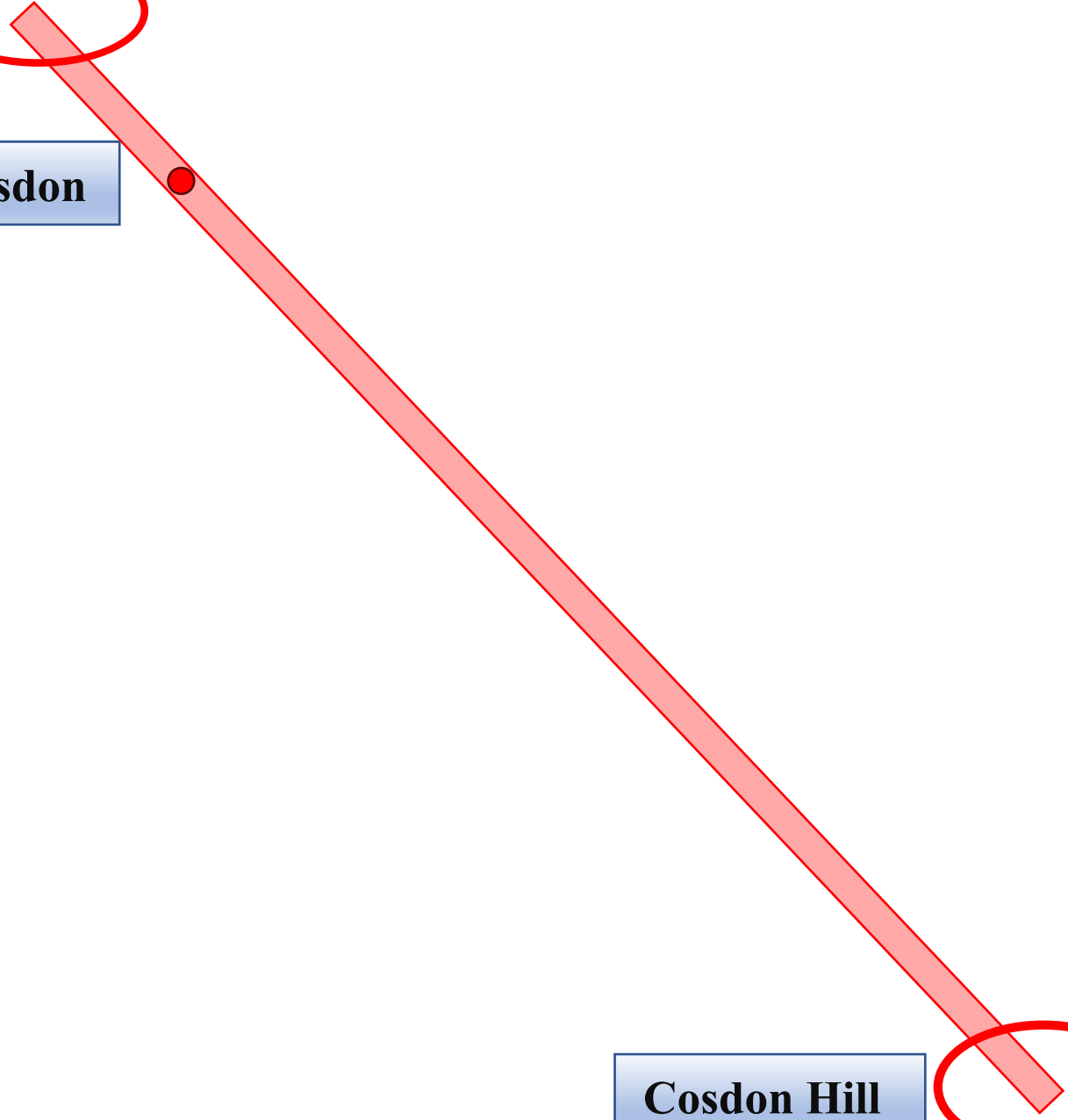
**Inwardleigh**



**Misdon**



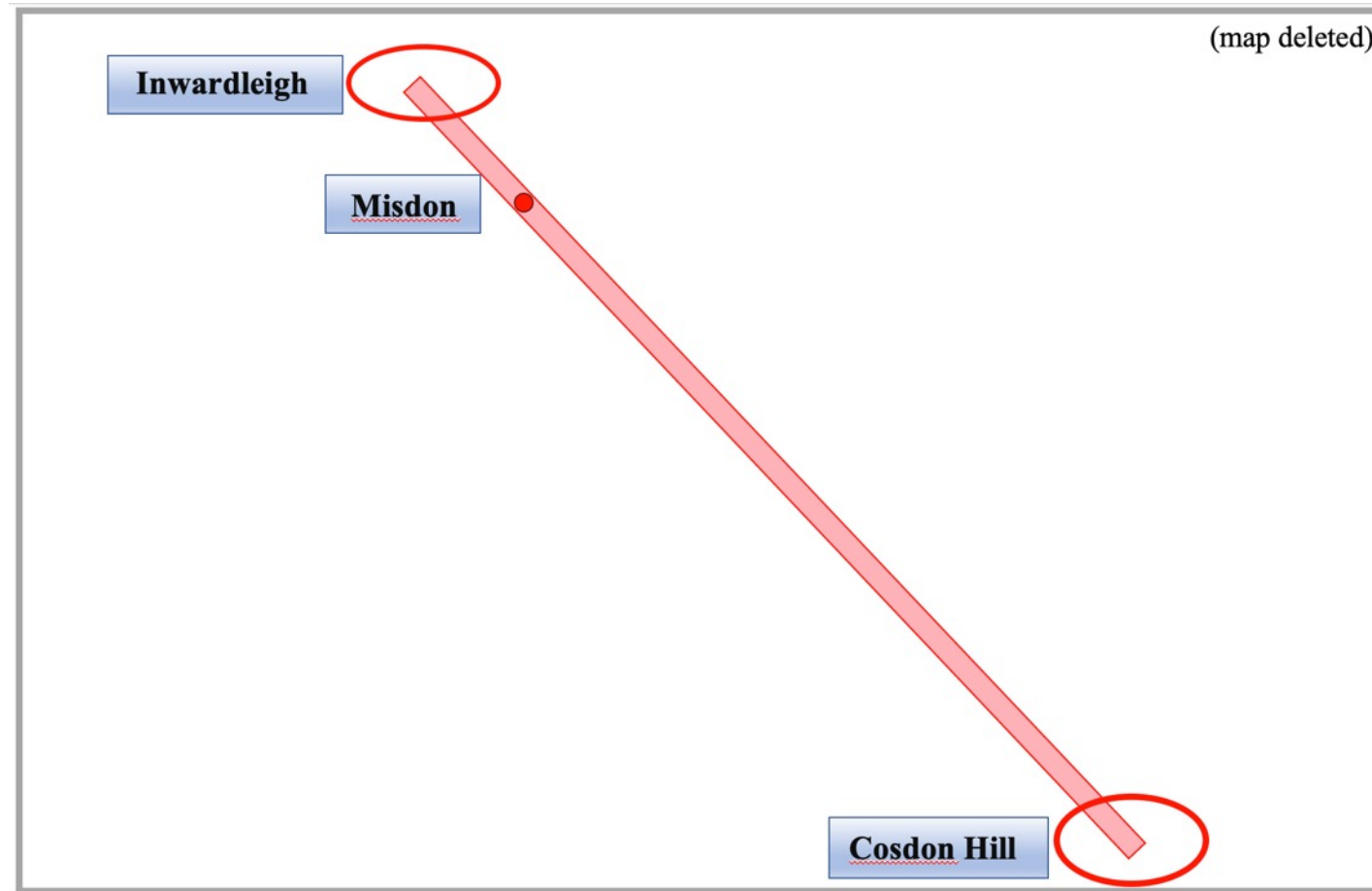
**Cosdon Hill**



# MISDON

*Myston* 1345 *Ass* (p), *Miston* 1609 *FF*. Probably 'mist hill,' . . .

*The Place-Names of Devon*, part I, p. 150, 1931.



## Weather forecast by the Met Office

Misdon, not available

instead, Okehampton, automatically suggested as nearest forecast, by typing in “Folly Gate”

Inwardleigh, not available

instead, Hatherleigh, automatically suggested as nearest forecast

Cosdon Hill, available





**Hatherleigh**



**Inwardleigh**

**Misdon**



**Okehampton**



**Cosdon Hill**

(map deleted)

Accessed to forecast pages of Okehampton, Hatherleigh and Cosdon Hill every day  
between 7 am and 8 am JST (22:00-23:00 UTC, 23:00-0:00 BST)  
from 1 December 2020 to 31 May 2021

Data partially missing:

8 January 2021, Okehampton

record of hours of mist and fog forecasts: saved

data on wind direction, wind speed and temperature in those hours: missing

31 January 2021, Okehampton

record of hours of mist and fog forecasts: saved

data on wind direction, wind speed and temperature in those hours: missing

Days not accessed between 7 am and 8 am JST (22:00-23:00 UTC, 23:00-0:00 BST):

- 1 December, at 9:12 JST (0:12 UTC)
- 6 December, at 9:37-9:39 JST (0:37-0:39 UTC)
- 9 December, at 6:33 JST (21:33 UTC)
- 12 December, at 6:39-6:40 JST (21:39-21:40 UTC)
- 13 December, at 9:00-9:01 JST (0:00-0:01 UTC)
- 16 December, at 6:24-6:25 JST (21:24-21:25 UTC)
- 17 December, at 6:24-6:25 JST (21:24-21:25 UTC)
- 19 December, at 8:23-8:25 JST (23:23-23:25 UTC)
- 20 December, at 6:54-6:56 JST (21:54-21:56 UTC)
- 21 December, at 8:13-8:16 JST (23:13-23:16 UTC)
- 23 December, at 8:06-8:09 JST (23:06-23:09 UTC)
- 22 January, at 8:02-8:03 JST (23:02-23:03 UTC)
- 6 April, at 5:16-5:17 JST (21:16-21:17 BST)



*Oxford English Dictionary* → No distinction made between *mist* and *fog*

mist, n.1

I. Senses relating to a cloud of **vapour**.

1.a. A natural phenomenon consisting of a diffuse cloud of fine **water droplets** suspended in the atmosphere on or near the ground **so as to limit visibility (but to a lesser extent than fog)**; . . .

fog, n.2

I. Senses relating to mist, smoke, or haze.

1.a. A state of the weather in which thick clouds of **water vapour** or ice crystals suspended in the atmosphere form at or near the earth's surface, **obscuring or restricting visibility to a greater extent than mist**; . . .

haze, n.

1.a. A fog or thick mist, or something resembling this; . . . In meteorology, *haze* is typically distinguished from ***fog and mist*** in being caused by solid particles rather than **droplets of water**.

		THURSDAY											
		00:00	01:00	02:00	03:00	04:00	05:00	06:00	07:00	08:00	09:00	10:00	11:00
weather symbol													
chance of precipitation		20%	20%	60%	50%	20%	10%	20%	50%	10%	20%	30%	60%
temperature		0°	0°	0°	0°	0°	0°	-1°	0°	0°	0°	0°	1°
	°C)												
feels like temperature		-4°	-4°	-4°	-4°	-4°	-4°	-4°	-4°	-4°	-4°	-3°	-3°
	°F)												
wind direction	dir (mph)	▲ WNW	▲ WNW	▲ WNW	▲ WNW	▲ WNW	▲ WNW	▲ WNW	▶ W	▲ WNW	▲ WNW	▶ W	▲ WNW
wind speed		5	5	7	6	5	6	6	5	7	6	6	7
wind gust		9	8	11	11	8	11	10	8	11	10	10	11
visibility		VP	VP	VP	VP	VP	M	VP	P	G	VP	P	P
humidity		100%	100%	100%	100%	100%	93%	100%	100%	93%	100%	100%	98%
UV		-	-	-	-	-	-	-	-	-	1	1	1

	THURSDAY											
	00:00	01:00	02:00	03:00	04:00	05:00	06:00	07:00	08:00	09:00	10:00	11:00
weather symbol												
chance of precipitation	20%	20%	60%	50%	20%	10%	20%	50%	10%	20%	30%	60%
temperature °C)	0°	0°	0°	0°	0°	0°	-1°	0°	0°	0°	0°	1°
feels like temperature	-4°	-4°	-4°	-4°	-4°	-4°	-4°	-4°	-4°	-4°	-3°	-3°
wind direction wind speed	WNW 5	WNW 5	WNW 7	WNW 6	WNW 5	WNW 6	WNW 6	W 5	WNW 7	WNW 6	W 6	WNW 7
wind gust	9	8	11	11	8	11	10	8	11	10	10	11
visibility	VP	VP	VP	VP	VP	M	VP	P	G	VP	P	P
humidity	100%	100%	100%	100%	100%	93%	100%	100%	93%	100%	100%	98%
UV	-	-	-	-	-	-	-	-	-	1	1	1



visited on Thursday 5 September 2013

**Monthly total**

<b>month</b>	<b>days</b>	<b>hours</b>
December	14	50
January	22	102
February	10	46
March	9	48
April	5	10
May	6	21
total	66	277

Okehampton (Misdon)

<b>month</b>	<b>days</b>	<b>hours</b>
December	3	3
January	10	34
February	1	6
March	2	5
April	1	5
May	1	7
total	18	60

Hatherleigh (Inwardleigh)

<b>month</b>	<b>days</b>	<b>hours</b>
December	12	49
January	19	125
February	11	43
March	12	64
April	5	15
May	5	15
total	64	311

Cosdon Hill

182 days: from 1 December 2020 to 31 May 2021

**Monthly total**

month	days	hours
January	22	102
December	14	50
March	9	48
February	10	46
May	6	21
April	5	10
total	66	277

Okehampton (Misdon)

month	days	hours
January	10	34
May	1	7
February	1	6
March	2	5
April	1	5
December	3	3
total	18	60

Hatherleigh (Inwardleigh)

month	days	hours
January	19	125
March	12	64
December	12	49
February	11	43
April	5	15
May	5	15
total	64	311

Cosdon Hill

182 days: from 1 December 2020 to 31 May 2021

# Hourly total

## Okehampton (Misdon)

hour	0:00	1:00	2:00	3:00	4:00	5:00	6:00	7:00	8:00	9:00	10:00	11:00
mist/fog hours	15	16	15	12	18	20	24	19	17	12	14	8

hour	12:00	13:00	14:00	15:00	16:00	17:00	18:00	19:00	20:00	21:00	22:00	23:00
mist/fog hours	6	5	3	3	2	2	9	13	12	8	11	13

## Hatherleigh (Inwardleigh)

hour	0:00	1:00	2:00	3:00	4:00	5:00	6:00	7:00	8:00	9:00	10:00	11:00
mist/fog hours	3	2	5	6	6	5	7	6	6	2	1	0

hour	12:00	13:00	14:00	15:00	16:00	17:00	18:00	19:00	20:00	21:00	22:00	23:00
mist/fog hours	0	0	0	0	1	2	2	2	0	2	1	1

## Cosdon Hill

hour	0:00	1:00	2:00	3:00	4:00	5:00	6:00	7:00	8:00	9:00	10:00	11:00
mist/fog hours	19	17	17	18	21	23	23	22	18	16	14	9

hour	12:00	13:00	14:00	15:00	16:00	17:00	18:00	19:00	20:00	21:00	22:00	23:00
mist/fog hours	6	5	2	3	3	5	10	13	16	10	10	11

# Setting Early, Mid and Late Eight Hours (3 equal divisions)



Early Eight Hours, 0:00-7:00



Mid Eight Hours, 8:00-15:00



Late Eight Hours, 16:00-23:00



# Distribution within a day (3 equal divisions)

Okehampton  
(Misdon)

<b>Early Eight Hours</b>	<b>0:00</b>	<b>1:00</b>	<b>2:00</b>	<b>3:00</b>	<b>4:00</b>	<b>5:00</b>	<b>6:00</b>	<b>7:00</b>	<b>total</b>	<b>percentage</b>
mist/fog hours	15	16	15	12	18	20	24	19	139	50.2%
<b>Mid Eight Hours</b>	<b>8:00</b>	<b>9:00</b>	<b>10:00</b>	<b>11:00</b>	<b>12:00</b>	<b>13:00</b>	<b>14:00</b>	<b>15:00</b>	<b>total</b>	<b>percentage</b>
mist/fog hours	17	12	14	8	6	5	3	3	68	24.5%
<b>Late Eight Hours</b>	<b>16:00</b>	<b>17:00</b>	<b>18:00</b>	<b>19:00</b>	<b>20:00</b>	<b>21:00</b>	<b>22:00</b>	<b>23:00</b>	<b>total</b>	<b>percentage</b>
mist/fog hours	2	2	9	13	12	8	11	13	70	25.3%

Hatherleigh  
(Inwardleigh)

<b>Early Eight Hours</b>	<b>0:00</b>	<b>1:00</b>	<b>2:00</b>	<b>3:00</b>	<b>4:00</b>	<b>5:00</b>	<b>6:00</b>	<b>7:00</b>	<b>total</b>	<b>percentage</b>
mist/fog hours	3	2	5	6	6	5	7	6	40	66.7%
<b>Mid Eight Hours</b>	<b>8:00</b>	<b>9:00</b>	<b>10:00</b>	<b>11:00</b>	<b>12:00</b>	<b>13:00</b>	<b>14:00</b>	<b>15:00</b>	<b>total</b>	<b>percentage</b>
mist/fog hours	6	2	1	0	0	0	0	0	9	15.0%
<b>Late Eight Hours</b>	<b>16:00</b>	<b>17:00</b>	<b>18:00</b>	<b>19:00</b>	<b>20:00</b>	<b>21:00</b>	<b>22:00</b>	<b>23:00</b>	<b>total</b>	<b>percentage</b>
mist/fog hours	1	2	2	2	0	2	1	1	11	18.3%

Cosdon Hill

<b>Early Eight Hours</b>	<b>0:00</b>	<b>1:00</b>	<b>2:00</b>	<b>3:00</b>	<b>4:00</b>	<b>5:00</b>	<b>6:00</b>	<b>7:00</b>	<b>total</b>	<b>percentage</b>
mist/fog hours	19	17	17	18	21	23	23	22	160	51.4%
<b>Mid Eight Hours</b>	<b>8:00</b>	<b>9:00</b>	<b>10:00</b>	<b>11:00</b>	<b>12:00</b>	<b>13:00</b>	<b>14:00</b>	<b>15:00</b>	<b>total</b>	<b>percentage</b>
mist/fog hours	18	16	14	9	6	5	2	3	73	23.5%
<b>Late Eight Hours</b>	<b>16:00</b>	<b>17:00</b>	<b>18:00</b>	<b>19:00</b>	<b>20:00</b>	<b>21:00</b>	<b>22:00</b>	<b>23:00</b>	<b>total</b>	<b>percentage</b>
mist/fog hours	3	5	10	13	16	10	10	11	78	25.1%

# Distributional patterns within a day (6 types)

Early Eight Hours	Mid Eight Hours	Late Eight Hours	type
0:00-7:00	8:00-15:00	16:00-23:00	
m/f			<b>E</b>
m/f	m/f		<b>EM</b>
m/f	m/f	m/f	<b>EML</b>
m/f		m/f	<b>EL</b>
	m/f	m/f	<b>M, ML</b>
		m/f	<b>L</b>

# Distributional patterns within a day (6 types)

	December		January		February		March		April		May	
	days	hours	days	hours	days	hours	days	hours	days	hours	days	hours
<b>E</b>	3	6	5	11	2	7	3	11	3	6	0	0
<b>EM</b>	3	16	4	24	2	13	2	21	0	0	3	16
<b>EML</b>	2	19	4	35	1	15	1	8	0	0	1	3
<b>EL</b>	1	3	2	9	1	5	0	0	1	3	0	0
<b>M, ML</b>	4	5	2	8	1	1	0	0	1	1	0	0
<b>L</b>	1	1	5	15	3	5	3	8	0	0	2	2
<b>total</b>	14	50	22	102	10	46	9	48	5	10	6	21

Okehampton (Misdon)

	December		January		February		March		April		May	
	days	hours	days	hours	days	hours	days	hours	days	hours	days	hours
<b>E</b>	1	1	1	1	0	0	2	5	0	0	1	7
<b>EM</b>	0	0	3	16	1	6	0	0	1	5	0	0
<b>EML</b>	0	0	0	0	0	0	0	0	0	0	0	0
<b>EL</b>	0	0	2	8	0	0	0	0	0	0	0	0
<b>M, ML</b>	0	0	2	2	0	0	0	0	0	0	0	0
<b>L</b>	2	2	2	7	0	0	0	0	0	0	0	0
<b>total</b>	3	3	10	34	1	6	2	5	1	5	1	7

Hatherleigh (Inwardleigh)

	December		January		February		March		April		May	
	days	hours	days	hours	days	hours	days	hours	days	hours	days	hours
<b>E</b>	1	3	4	9	4	14	4	15	3	9	1	2
<b>EM</b>	4	23	4	33	2	12	3	25	0	0	3	12
<b>EML</b>	2	15	4	46	1	11	2	14	0	0	0	0
<b>EL</b>	1	2	2	16	0	0	1	3	1	5	0	0
<b>M, ML</b>	3	5	1	6	2	2	0	0	1	1	0	0
<b>L</b>	1	1	4	15	2	4	2	7	0	0	1	1
<b>total</b>	12	49	19	125	11	43	12	64	5	15	5	15

Cosdon Hill

# Distributional patterns within a day (6 types)

	December		January		February		March		April		May	
	days	hours	days	hours	days	hours	days	hours	days	hours	days	hours
E	3	6	5	11	2	7	3	11	3	6	0	0
EM	3	16	4	24	2	13	2	21	0	0	3	16
EML	2	19	4	35	1	15	1	8	0	0	1	3
EL	1	3	2	9	1	5	0	0	1	3	0	0
M, ML	4	5	2	8	1	1	0	0	1	1	0	0
L	1	1	5	15	3	5	3	8	0	0	2	2
total	14	50	22	102	10	46	9	48	5	10	6	21

Okehampton (Misdon)

top 3 types of each month highlighted

	December		January		February		March		April		May	
	days	hours	days	hours	days	hours	days	hours	days	hours	days	hours
E	1	1	1	1	0	0	2	5	0	0	1	7
EM	0	0	3	16	1	6	0	0	1	5	0	0
EML	0	0	0	0	0	0	0	0	0	0	0	0
EL	0	0	2	8	0	0	0	0	0	0	0	0
M, ML	0	0	2	2	0	0	0	0	0	0	0	0
L	2	2	2	7	0	0	0	0	0	0	0	0
total	3	3	10	34	1	6	2	5	1	5	1	7

Hatherleigh (Inwardleigh)

top 3 types of each month highlighted

	December		January		February		March		April		May	
	days	hours	days	hours	days	hours	days	hours	days	hours	days	hours
E	1	3	4	9	4	14	4	15	3	9	1	2
EM	4	23	4	33	2	12	3	25	0	0	3	12
EML	2	15	4	46	1	11	2	14	0	0	0	0
EL	1	2	2	16	0	0	1	3	1	5	0	0
M, ML	3	5	1	6	2	2	0	0	1	1	0	0
L	1	1	4	15	2	4	2	7	0	0	1	1
total	12	49	19	125	11	43	12	64	5	15	5	15

Cosdon Hill

top 3 types of each month highlighted

# Distributional patterns within a day (6 types)

	December		January		February		March		April		May	
	days	hours	days	hours	days	hours	days	hours	days	hours	days	hours
E	3	6	5	11	2	7	3	11	3	6	0	0
EM	3	16	4	24	2	13	2	21	0	0	3	16
EML	2	19	4	35	1	15	1	8	0	0	1	3
EL	1	3	2	9	1	5	0	0	1	3	0	0
M, ML	4	5	2	8	1	1	0	0	1	1	0	0
L	1	1	5	15	3	5	3	8	0	0	2	2
total	14	50	22	102	10	46	9	48	5	10	6	21

Okehampton (Misdon)

EM, most persistent

	December		January		February		March		April		May	
	days	hours	days	hours	days	hours	days	hours	days	hours	days	hours
E	1	1	1	1	0	0	2	5	0	0	1	7
EM	0	0	3	16	1	6	0	0	1	5	0	0
EML	0	0	0	0	0	0	0	0	0	0	0	0
EL	0	0	2	8	0	0	0	0	0	0	0	0
M, ML	0	0	2	2	0	0	0	0	0	0	0	0
L	2	2	2	7	0	0	0	0	0	0	0	0
total	3	3	10	34	1	6	2	5	1	5	1	7

Hatherleigh (Inwardleigh)

EM, most persistent

	December		January		February		March		April		May	
	days	hours	days	hours	days	hours	days	hours	days	hours	days	hours
E	1	3	4	9	4	14	4	15	3	9	1	2
EM	4	23	4	33	2	12	3	25	0	0	3	12
EML	2	15	4	46	1	11	2	14	0	0	0	0
EL	1	2	2	16	0	0	1	3	1	5	0	0
M, ML	3	5	1	6	2	2	0	0	1	1	0	0
L	1	1	4	15	2	4	2	7	0	0	1	1
total	12	49	19	125	11	43	12	64	5	15	5	15

Cosdon Hill

EM, most persistent

# Distributional patterns within a day (6 types)

	December		January		February		March		April		May	
	days	hours	days	hours	days	hours	days	hours	days	hours	days	hours
E	3	6	5	11	2	7	3	11	3	6	0	0
EM	3	16	4	24	2	13	2	21	0	0	3	16
EML	2	19	4	35	1	15	1	8	0	0	1	3
EL	1	3	2	9	1	5	0	0	1	3	0	0
M, ML	4	5	2	8	1	1	0	0	1	1	0	0
L	1	1	5	15	3	5	3	8	0	0	2	2
total	14	50	22	102	10	46	9	48	5	10	6	21

Okehampton (Misdon)

EM, most persistent

EM > EML > E > L (3 months or more)

	December		January		February		March		April		May	
	days	hours	days	hours	days	hours	days	hours	days	hours	days	hours
E	1	1	1	1	0	0	2	5	0	0	1	7
EM	0	0	3	16	1	6	0	0	1	5	0	0
EML	0	0	0	0	0	0	0	0	0	0	0	0
EL	0	0	2	8	0	0	0	0	0	0	0	0
M, ML	0	0	2	2	0	0	0	0	0	0	0	0
L	2	2	2	7	0	0	0	0	0	0	0	0
total	3	3	10	34	1	6	2	5	1	5	1	7

Hatherleigh (Inwardleigh)

EM, most persistent

EM > E (3 months or more)

	December		January		February		March		April		May	
	days	hours	days	hours	days	hours	days	hours	days	hours	days	hours
E	1	3	4	9	4	14	4	15	3	9	1	2
EM	4	23	4	33	2	12	3	25	0	0	3	12
EML	2	15	4	46	1	11	2	14	0	0	0	0
EL	1	2	2	16	0	0	1	3	1	5	0	0
M, ML	3	5	1	6	2	2	0	0	1	1	0	0
L	1	1	4	15	2	4	2	7	0	0	1	1
total	12	49	19	125	11	43	12	64	5	15	5	15

Cosdon Hill

EM, most persistent

EM > E > EML (3 months or more)

# Distributional patterns within a day (6 types)

	December		January		February		March		April		May	
	days	hours	days	hours	days	hours	days	hours	days	hours	days	hours
E	3	6	5	11	2	7	3	11	3	6	0	0
EM	3	16	4	24	2	13	2	21	0	0	3	16
EML	2	19	4	35	1	15	1	8	0	0	1	3
EL	1	3	2	9	1	5	0	0	1	3	0	0
M, ML	4	5	2	8	1	1	0	0	1	1	0	0
L	1	1	5	15	3	5	3	8	0	0	2	2
total	14	50	22	102	10	46	9	48	5	10	6	21

Okehampton (Misdon)

EM, most persistent

EM > EML > E > L (3 months or more)

	December		January		February		March		April		May	
	days	hours	days	hours	days	hours	days	hours	days	hours	days	hours
E	1	1	1	1	0	0	2	5	0	0	1	7
EM	0	0	3	16	1	6	0	0	1	5	0	0
EML	0	0	0	0	0	0	0	0	0	0	0	0
EL	0	0	2	8	0	0	0	0	0	0	0	0
M, ML	0	0	2	2	0	0	0	0	0	0	0	0
L	2	2	2	7	0	0	0	0	0	0	0	0
total	3	3	10	34	1	6	2	5	1	5	1	7

Hatherleigh (Inwardleigh)

EM, most persistent

EM > E (3 months or more)

	December		January		February		March		April		May	
	days	hours	days	hours	days	hours	days	hours	days	hours	days	hours
E	1	3	4	9	4	14	4	15	3	9	1	2
EM	4	23	4	33	2	12	3	25	0	0	3	12
EML	2	15	4	46	1	11	2	14	0	0	0	0
EL	1	2	2	16	0	0	1	3	1	5	0	0
M, ML	3	5	1	6	2	2	0	0	1	1	0	0
L	1	1	4	15	2	4	2	7	0	0	1	1
total	12	49	19	125	11	43	12	64	5	15	5	15

Cosdon Hill

EM, most persistent

EM > E > EML (3 months or more)

# Distributional patterns within a day (6 types)

	December		January		February		March		April		May	
	days	hours	days	hours	days	hours	days	hours	days	hours	days	hours
E	3	6	5	11	2	7	3	11	3	6	0	0
EM	3	16	4	24	2	13	2	21	0	0	3	16
EML	2	19	4	35	1	15	1	8	0	0	1	3
EL	1	3	2	9	1	5	0	0	1	3	0	0
M, ML	4	5	2	8	1	1	0	0	1	1	0	0
L	1	1	5	15	3	5	3	8	0	0	2	2
total	14	50	22	102	10	46	9	48	5	10	6	21

Okehampton (Misdon)

EM, most persistent

EM > EML > E > L (3 months or more)

	December		January		February		March		April		May	
	days	hours	days	hours	days	hours	days	hours	days	hours	days	hours
E	1	1	1	1	0	0	2	5	0	0	1	7
EM	0	0	3	16	1	6	0	0	1	5	0	0
EML	0	0	0	0	0	0	0	0	0	0	0	0
EL	0	0	2	8	0	0	0	0	0	0	0	0
M, ML	0	0	2	2	0	0	0	0	0	0	0	0
L	2	2	2	7	0	0	0	0	0	0	0	0
total	3	3	10	34	1	6	2	5	1	5	1	7

Hatherleigh (Inwardleigh)

EM, most persistent

EM > E (3 months or more)

	December		January		February		March		April		May	
	days	hours	days	hours	days	hours	days	hours	days	hours	days	hours
E	1	3	4	9	4	14	4	15	3	9	1	2
EM	4	23	4	33	2	12	3	25	0	0	3	12
EML	2	15	4	46	1	11	2	14	0	0	0	0
EL	1	2	2	16	0	0	1	3	1	5	0	0
M, ML	3	5	1	6	2	2	0	0	1	1	0	0
L	1	1	4	15	2	4	2	7	0	0	1	1
total	12	49	19	125	11	43	12	64	5	15	5	15

Cosdon Hill

EM, most persistent

EM > E > EML (3 months or more)



# Distributional patterns within a day (6 types)

	December		January		February		March		April		May	
	days	hours	days	hours	days	hours	days	hours	days	hours	days	hours
E	3	6	5	11	2	7	3	11	3	6	0	0
EM	3	16	4	24	2	13	2	21	0	0	3	16
EML	2	19	4	35	1	15	1	8	0	0	1	3
EL	1	3	2	9	1	5	0	0	1	3	0	0
M, ML	4	5	2	8	1	1	0	0	1	1	0	0
L	1	1	5	15	3	5	3	8	0	0	2	2
total	14	50	22	102	10	46	9	48	5	10	6	21

Okehampton (Misdon)

EM, most persistent

EM > EML > E > L (3 months or more)

	December		January		February		March		April		May	
	days	hours	days	hours	days	hours	days	hours	days	hours	days	hours
E	1	1	1	1	0	0	2	5	0	0	1	7
EM	0	0	3	16	1	6	0	0	1	5	0	0
EML	0	0	0	0	0	0	0	0	0	0	0	0
EL	0	0	2	8	0	0	0	0	0	0	0	0
M, ML	0	0	2	2	0	0	0	0	0	0	0	0
L	2	2	2	7	0	0	0	0	0	0	0	0
total	3	3	10	34	1	6	2	5	1	5	1	7

Hatherleigh (Inwardleigh)

EM, most persistent

EM > E (3 months or more)

	December		January		February		March		April		May	
	days	hours	days	hours	days	hours	days	hours	days	hours	days	hours
E	1	3	4	9	4	14	4	15	3	9	1	2
EM	4	23	4	33	2	12	3	25	0	0	3	12
EML	2	15	4	46	1	11	2	14	0	0	0	0
EL	1	2	2	16	0	0	1	3	1	5	0	0
M, ML	3	5	1	6	2	2	0	0	1	1	0	0
L	1	1	4	15	2	4	2	7	0	0	1	1
total	12	49	19	125	11	43	12	64	5	15	5	15

Cosdon Hill

EM, most persistent

EM > E > EML (3 months or more)

# Wind direction: Introduction

## Okehampton (Misdon)

direction	hours	percentage
N	14	5.1%
NNE	20	7.3%
NE	25	9.1%
ENE	19	6.9%
E	14	5.1%
ESE	8	2.9%
SE	7	2.6%
SSE	6	2.2%
S	3	1.1%
SSW	9	3.3%
SW	14	5.1%
WSW	28	10.2%
W	43	15.7%
WNW	27	9.9%
NW	14	5.1%
NNW	23	8.4%
no data	3	no data
total	277	100.0%

## Hatherleigh (Inwardleigh)

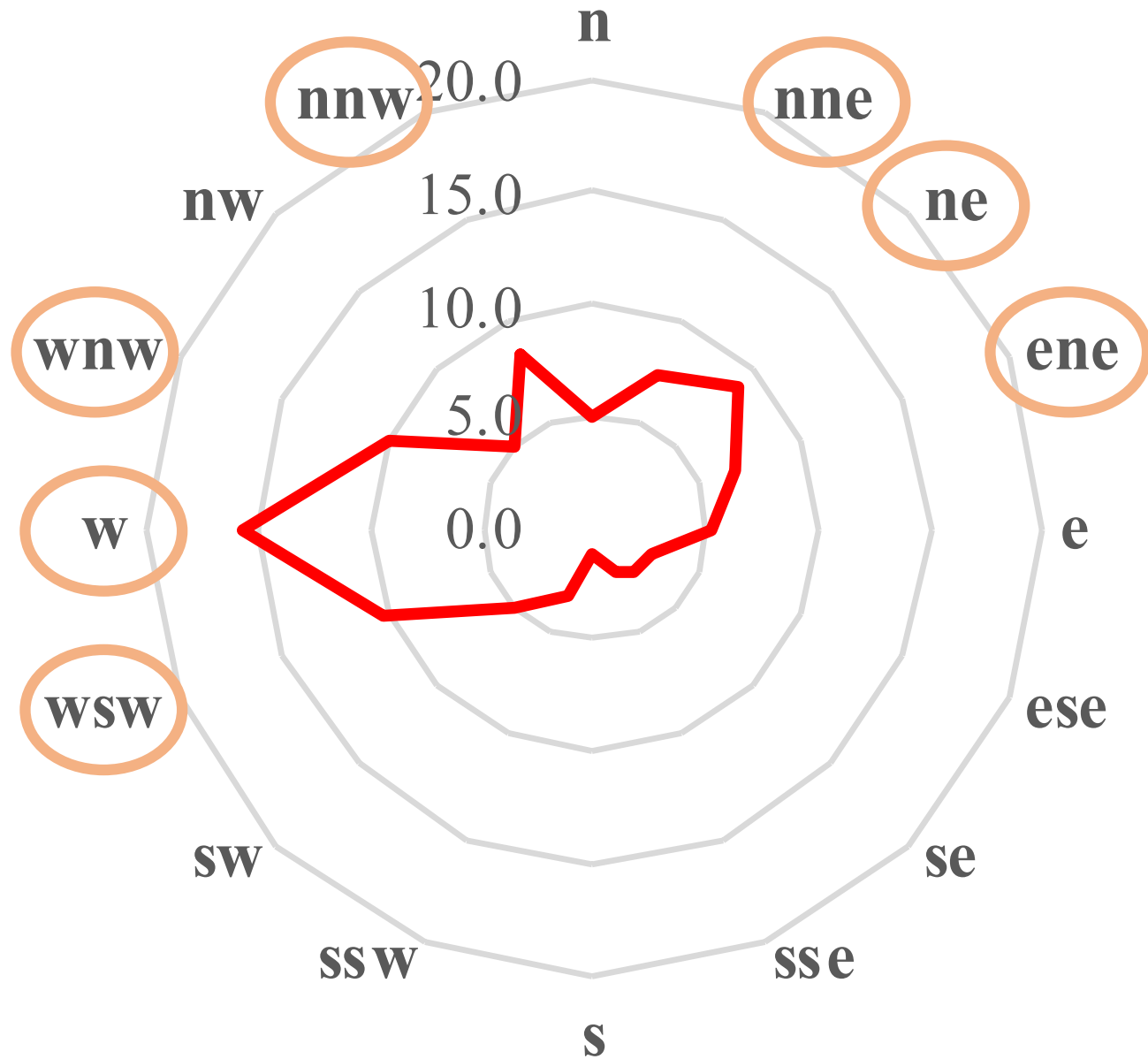
direction	hours	percentage
N	3	5.0%
NNE	0	0.0%
NE	3	5.0%
ENE	0	0.0%
E	0	0.0%
ESE	2	3.3%
SE	5	8.3%
SSE	0	0.0%
S	0	0.0%
SSW	7	11.7%
SW	7	11.7%
WSW	13	21.7%
W	7	11.7%
WNW	1	1.7%
NW	6	10.0%
NNW	6	10.0%
total	60	100.0%

## Cosdon Hill

direction	hours	percentage
N	10	3.2%
NNE	15	4.8%
NE	31	10.0%
ENE	24	7.7%
E	14	4.5%
ESE	14	4.5%
SE	20	6.4%
SSE	10	3.2%
S	4	1.3%
SSW	8	2.6%
SW	6	1.9%
WSW	17	5.5%
W	44	14.1%
WNW	33	10.6%
NW	37	11.9%
NNW	24	7.7%
total	311	100.0%

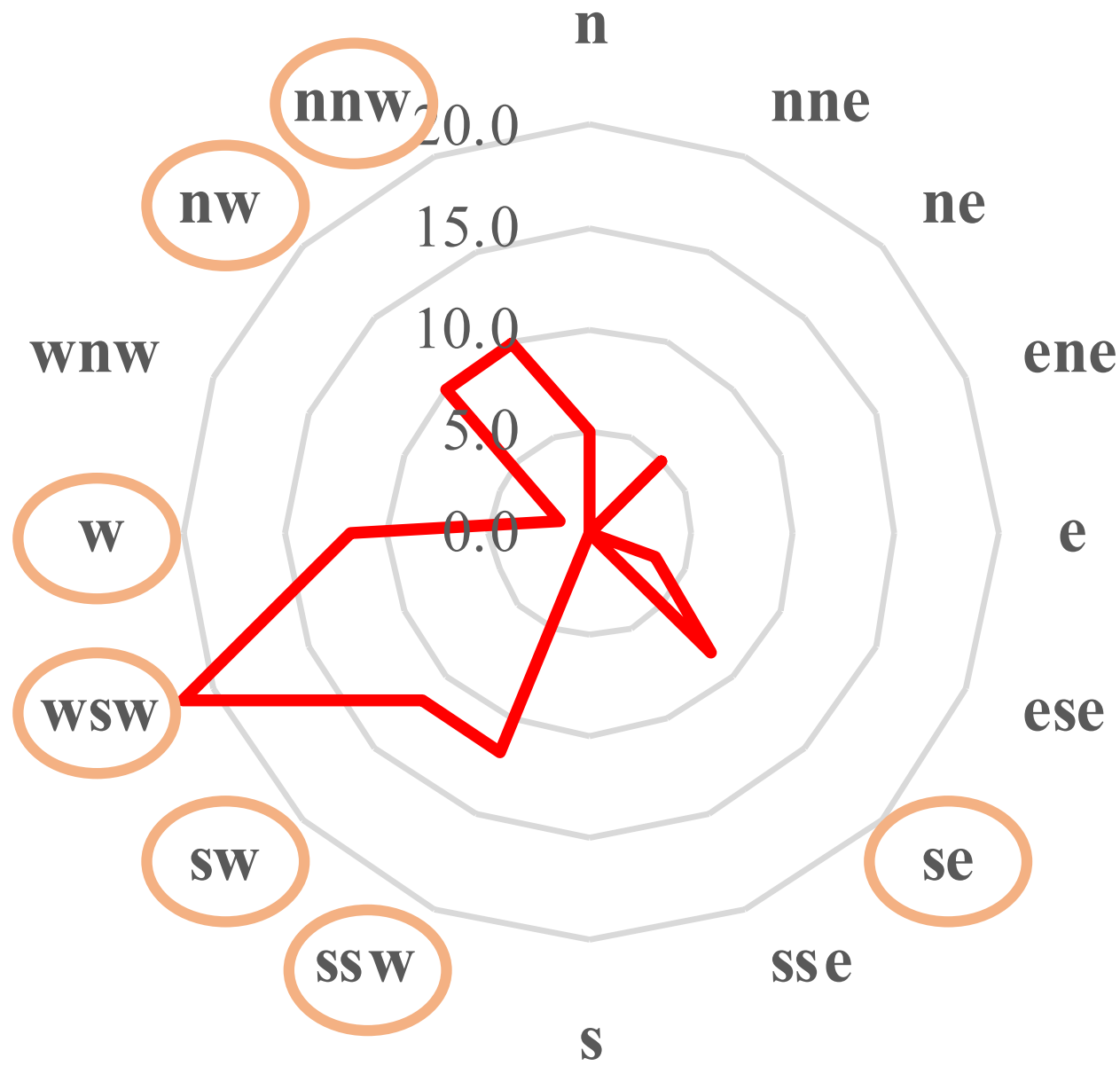
# Wind direction: Okehampton (Misdon)

direction	hours	percentage
W	43	15.7%
WSW	28	10.2%
WNW	27	9.9%
NE	25	9.1%
NNW	23	8.4%
NNE	20	7.3%
ENE	19	6.9%
N	14	5.1%
E	14	5.1%
SW	14	5.1%
NW	14	5.1%
SSW	9	3.3%
ESE	8	2.9%
SE	7	2.6%
SSE	6	2.2%
S	3	1.1%
no data	3	no data
total	277	100.0%



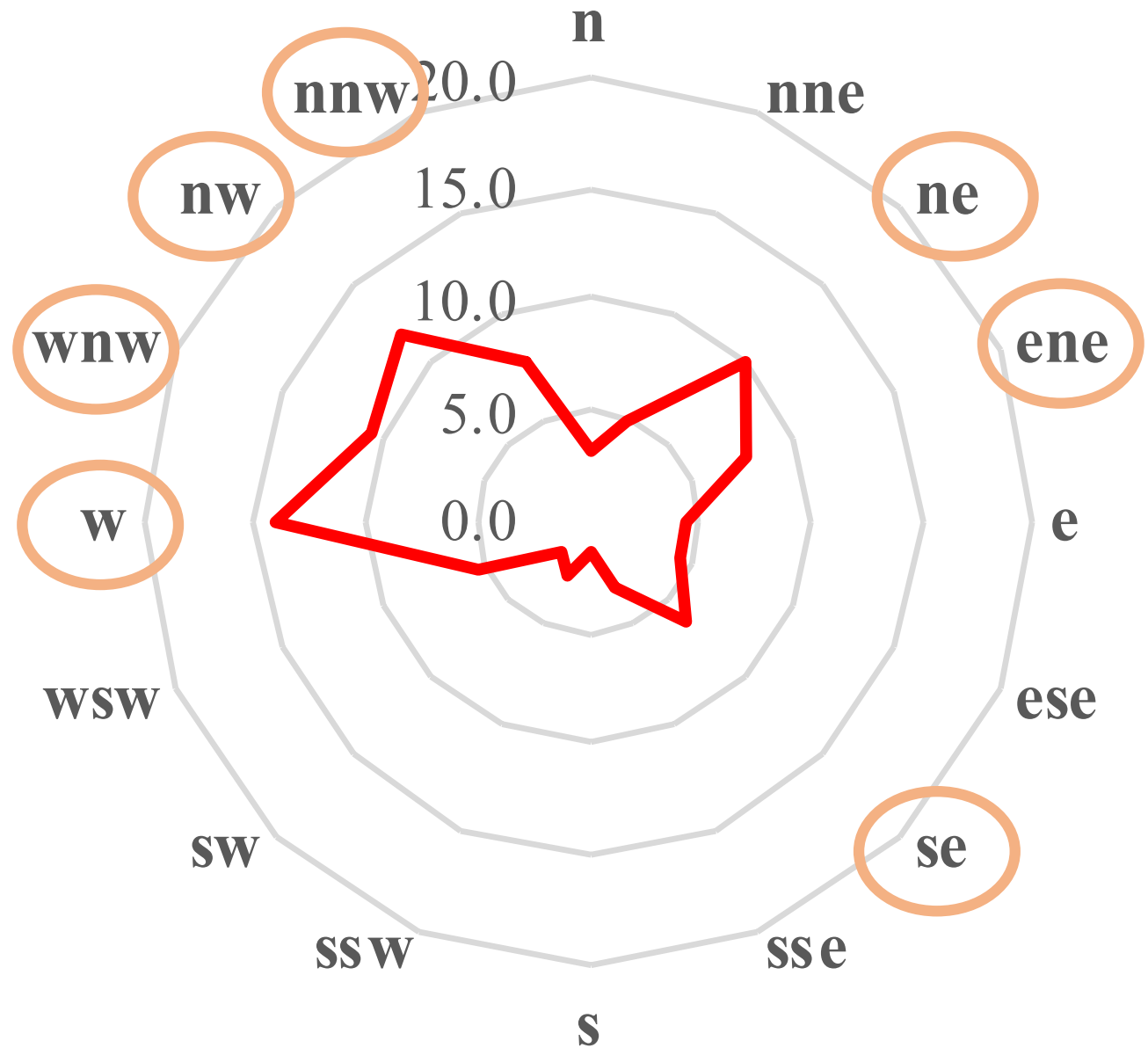
# Wind direction: Hatherleigh (Inwardleigh)

direction	hours	percentage
WSW	13	21.7%
SSW	7	11.7%
SW	7	11.7%
W	7	11.7%
NW	6	10.0%
NNW	6	10.0%
SE	5	8.3%
N	3	5.0%
NE	3	5.0%
ESE	2	3.3%
WNW	1	1.7%
NNE	0	0.0%
ENE	0	0.0%
E	0	0.0%
SSE	0	0.0%
S	0	0.0%
total	60	100.0%

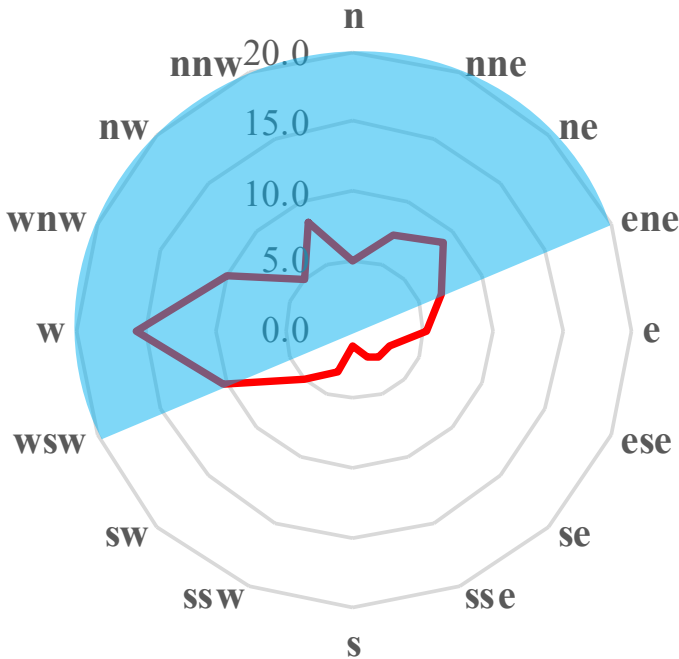


# Wind direction: Cosdon Hill

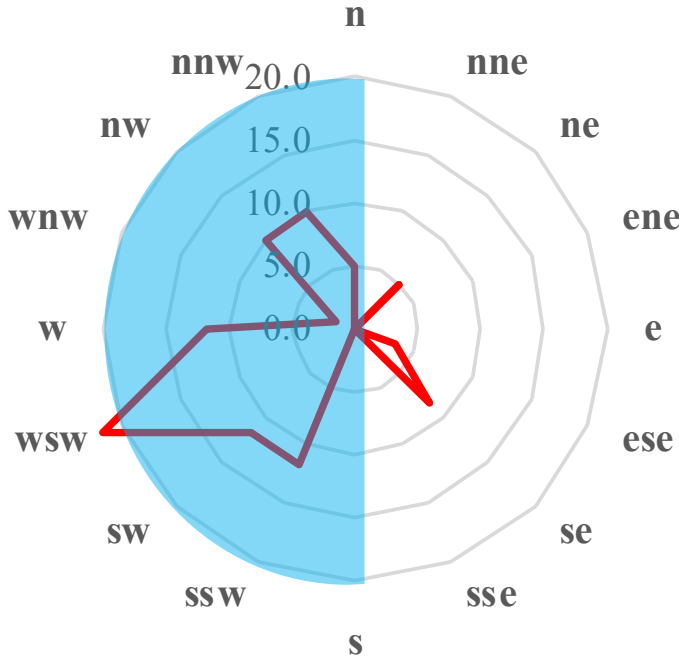
direction	hours	percentage
W	44	14.1%
NW	37	11.9%
WNW	33	10.6%
NE	31	10.0%
ENE	24	7.7%
NNW	24	7.7%
SE	20	6.4%
WSW	17	5.5%
NNE	15	4.8%
E	14	4.5%
ESE	14	4.5%
N	10	3.2%
SSE	10	3.2%
SSW	8	2.6%
SW	6	1.9%
S	4	1.3%
total	311	100.0%



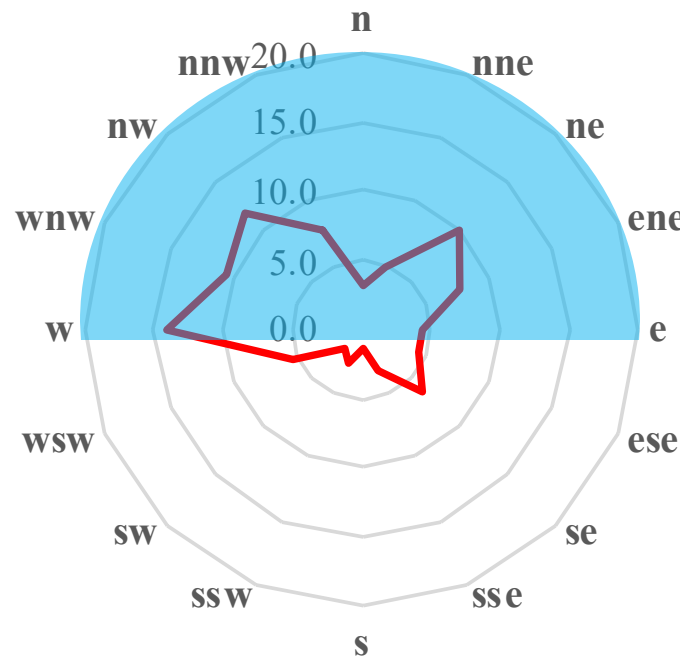
# Wind direction: Summary



Okehampton (Misdon)



Hatherleigh (Inwardleigh)



Cosdon Hill

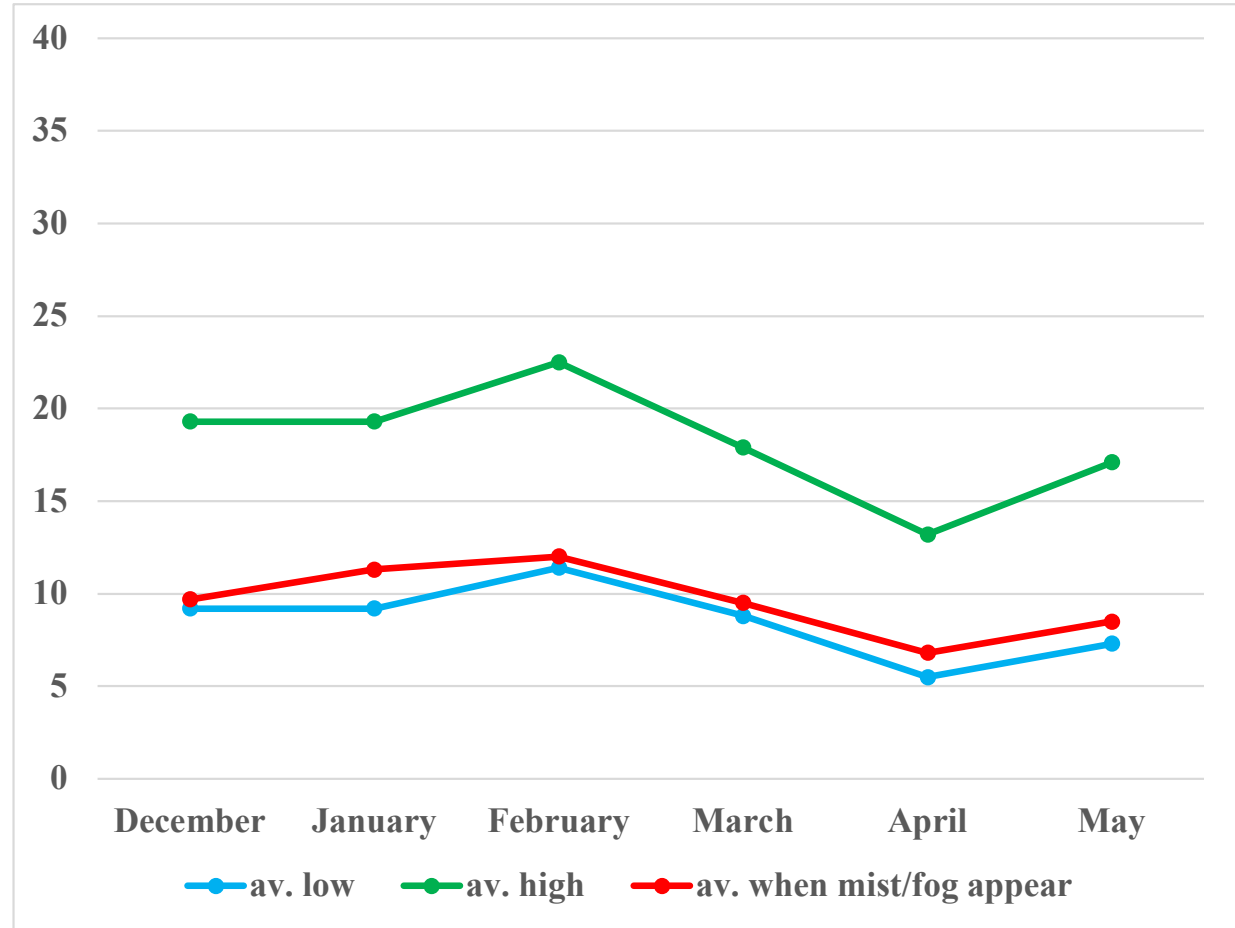
## Wind speed: Introduction

Three average values:

- (1) the monthly average of wind speed when mist and fog were forecast to appear  
red line in the graph
- (2) the average low of the wind speed in each month  
blue line in the graph
- (3) the average high of the wind speed in each month  
green line in the graph

# Wind speed: Okehampton (Misdon)

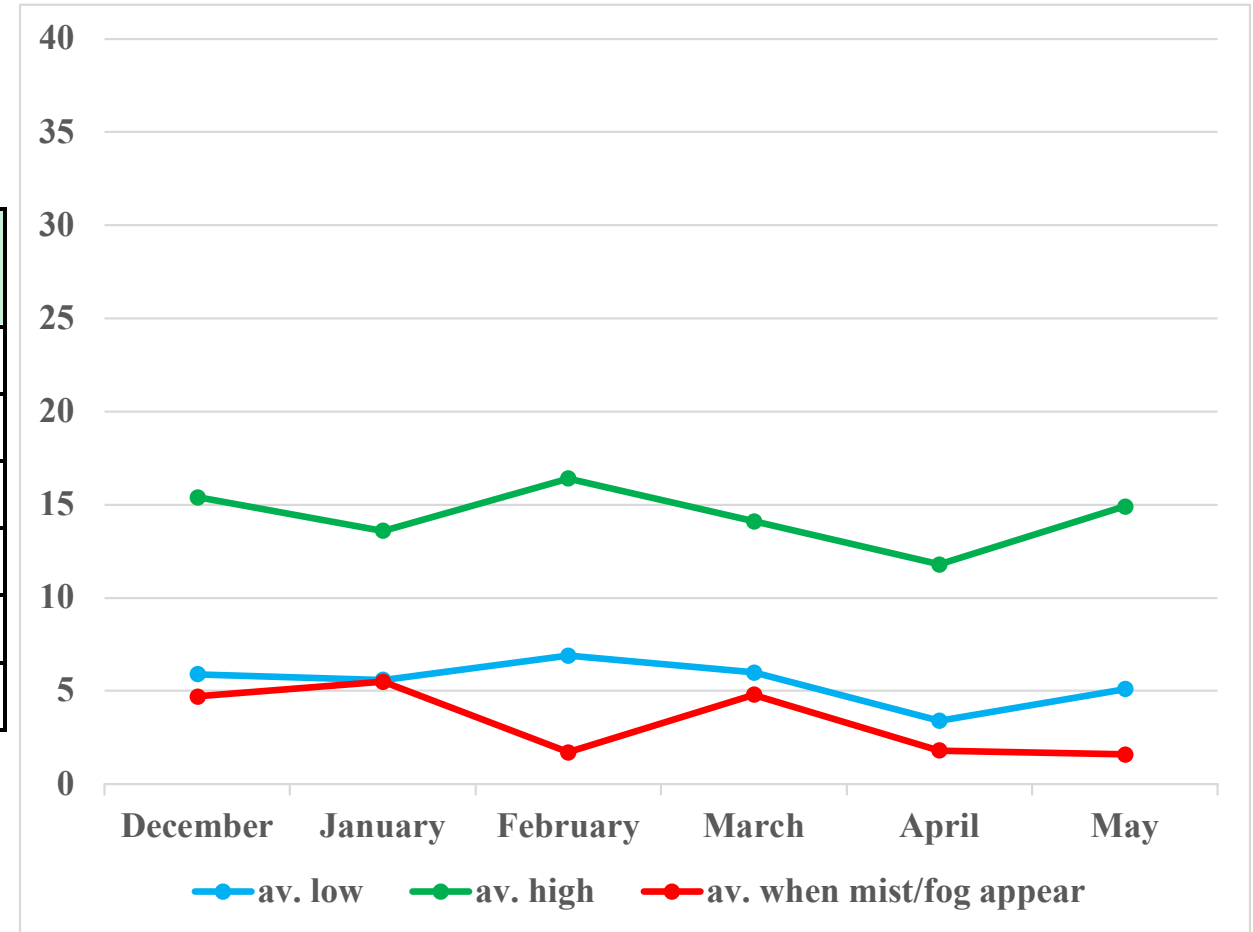
	(1) average when mist/fog appear	(2) average low	(3) average high
December	9.7 mph	9.2 mph	19.3 mph
January	11.3 mph	9.2 mph	19.3 mph
February	12.0 mph	11.4 mph	22.5 mph
March	9.5 mph	8.8 mph	17.9 mph
April	6.8 mph	5.5 mph	13.2 mph
May	8.5 mph	7.3 mph	17.1 mph





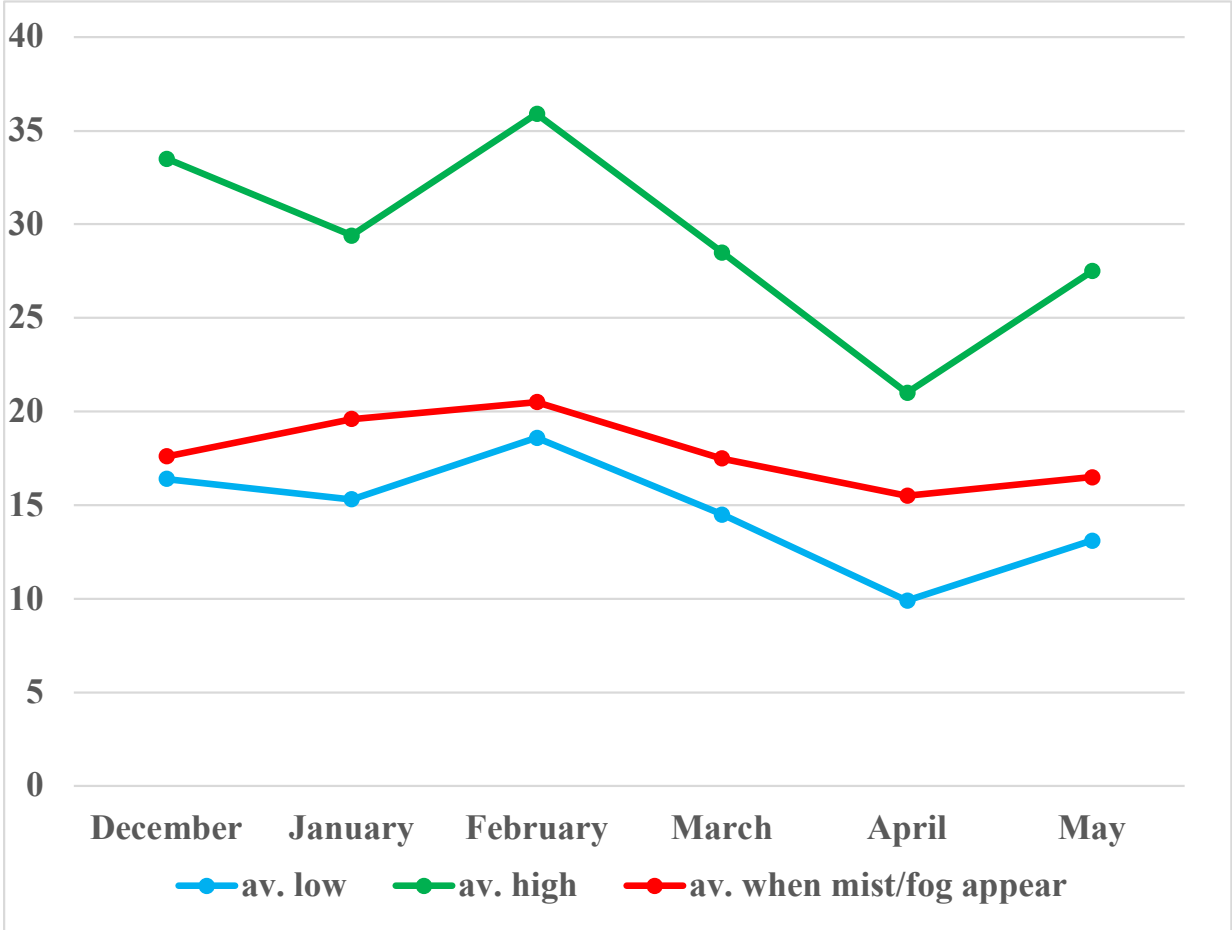
# Wind speed: Hatherleigh (Inwardleigh)

	(1) average when mist/fog appear	(2) average low	(3) average high
December	4.7 mph	5.9 mph	15.4 mph
January	5.5 mph	5.6 mph	13.6 mph
February	1.7 mph	6.9 mph	16.4 mph
March	4.8 mph	6.0 mph	14.1 mph
April	1.8 mph	3.4 mph	11.8 mph
May	1.6 mph	5.1 mph	14.9 mph



# Wind speed: Cosdon Hill

	(1) average when mist/fog appear	(2) average low	(3) average high
<b>December</b>	17.6 mph	16.4 mph	33.5 mph
<b>January</b>	19.6 mph	15.3 mph	29.4 mph
<b>February</b>	20.5 mph	18.6 mph	35.9 mph
<b>March</b>	17.5 mph	14.5 mph	28.5 mph
<b>April</b>	15.5 mph	9.9 mph	21.0 mph
<b>May</b>	16.5 mph	13.1 mph	27.5 mph

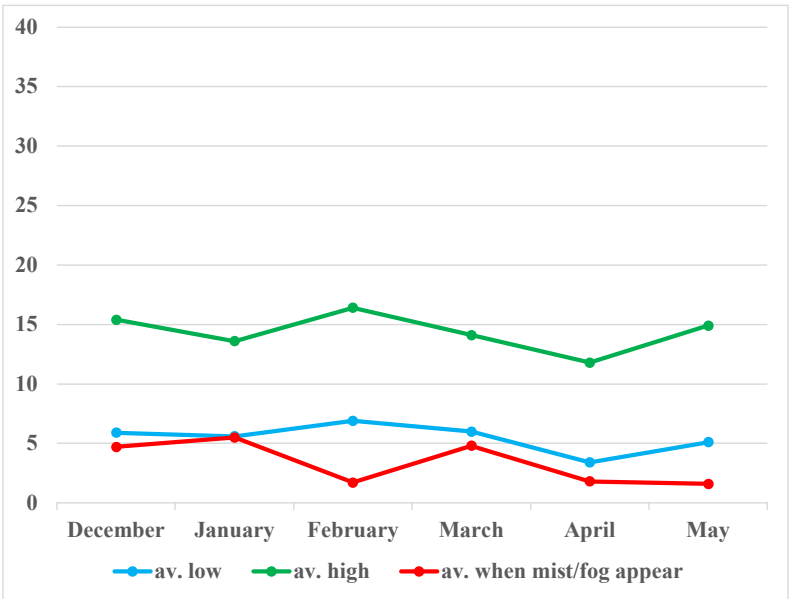


# Wind speed: Summary

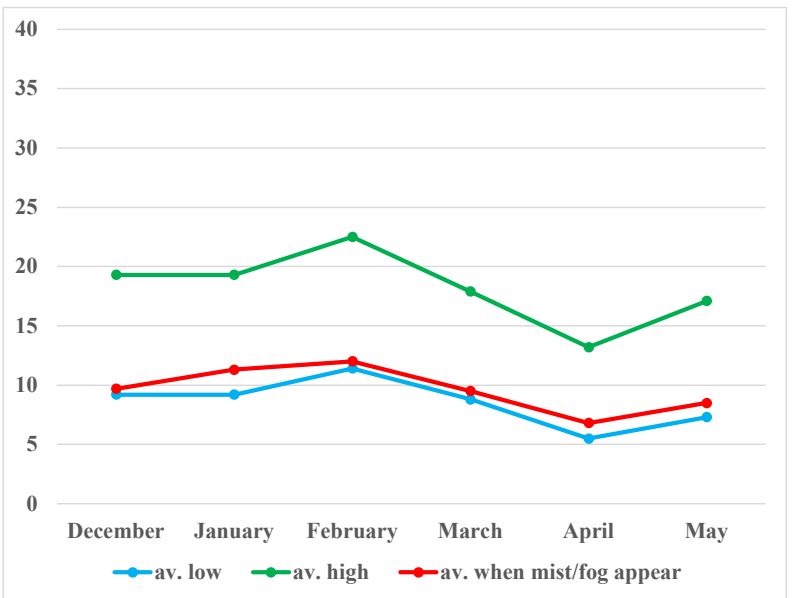
**red:**  
monthly average of wind speed during mist and fog forecasts

**blue:**  
average low of the wind speed in each month

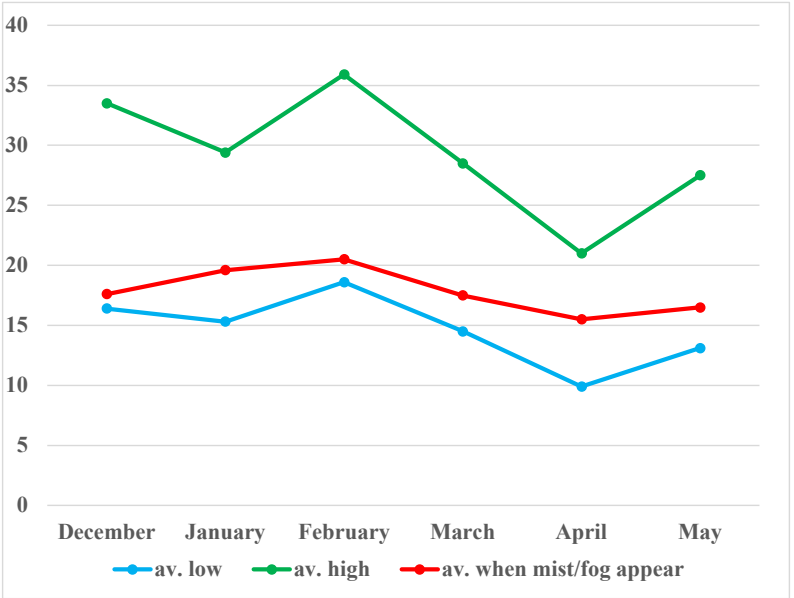
**green:**  
average high of the wind speed in each month



Hatherleigh (Inwardleigh)



Okehampton (Misdon)



Cosdon Hill

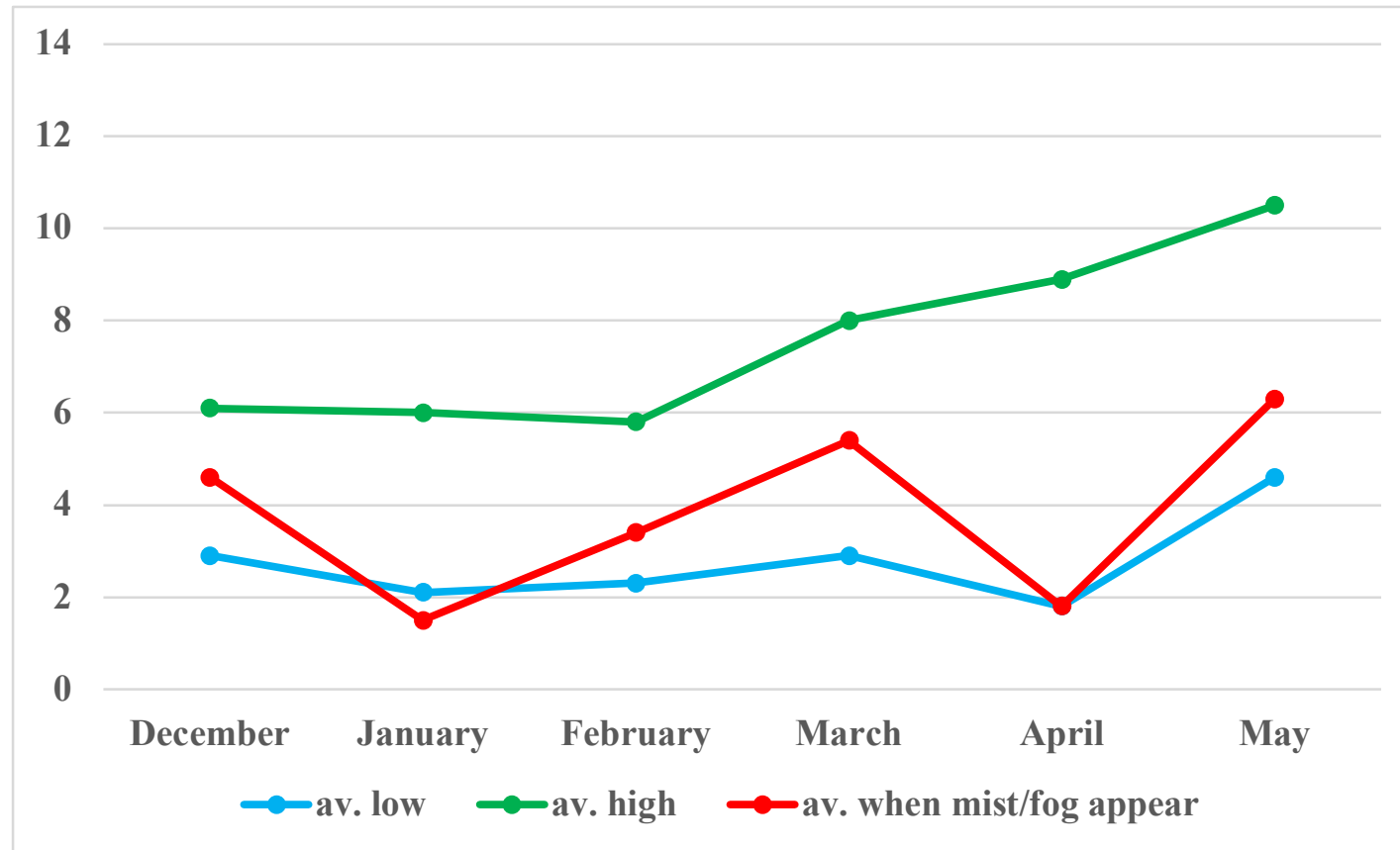
## Temperature: Introduction

Three average values plus one more thing:

- (1) the monthly average of temperature when mist and fog were forecast to appear  
red line in the graph
- (2) the average low of the temperature in each month  
blue line in the graph
- (3) the average high of the temperature in each month  
green line in the graph
- (4) the gap between (1) and (2), i.e., (1) minus (2)

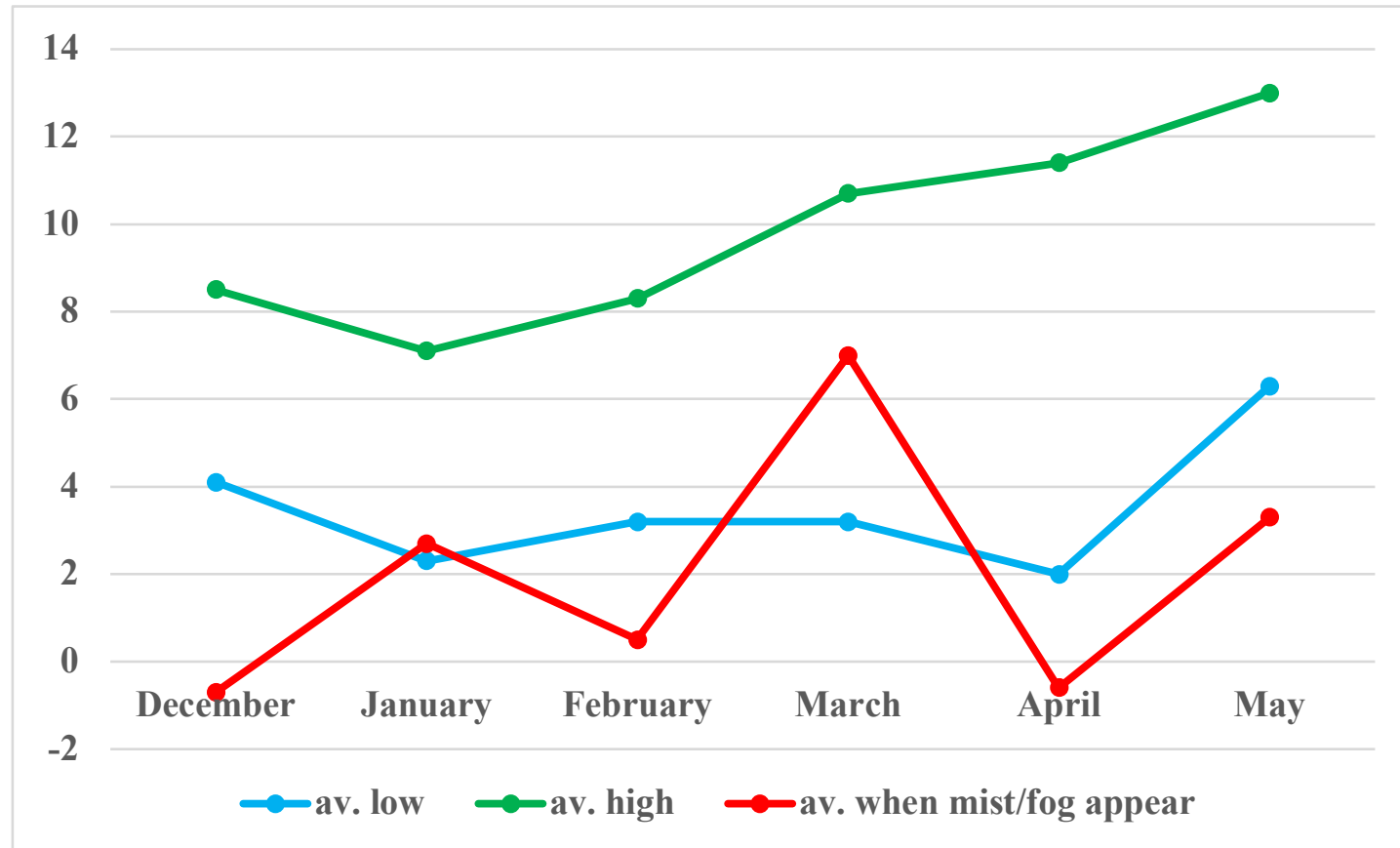
# Temperature: Okehampton (Misdon)

	December	January	February	March	April	May
(1) average when mist/fog appear	4.6 °C	1.5 °C	3.4 °C	5.4 °C	1.8 °C	6.3 °C
(2) average low	2.9 °C	2.1 °C	2.3 °C	2.9 °C	1.8 °C	4.6 °C
(3) average high	6.1 °C	6.0 °C	5.8 °C	8.0 °C	8.9 °C	10.5 °C
(4) gap: (1) - (2)	1.7 °C	-0.6 °C	1.1 °C	2.5 °C	0.0 °C	1.7 °C



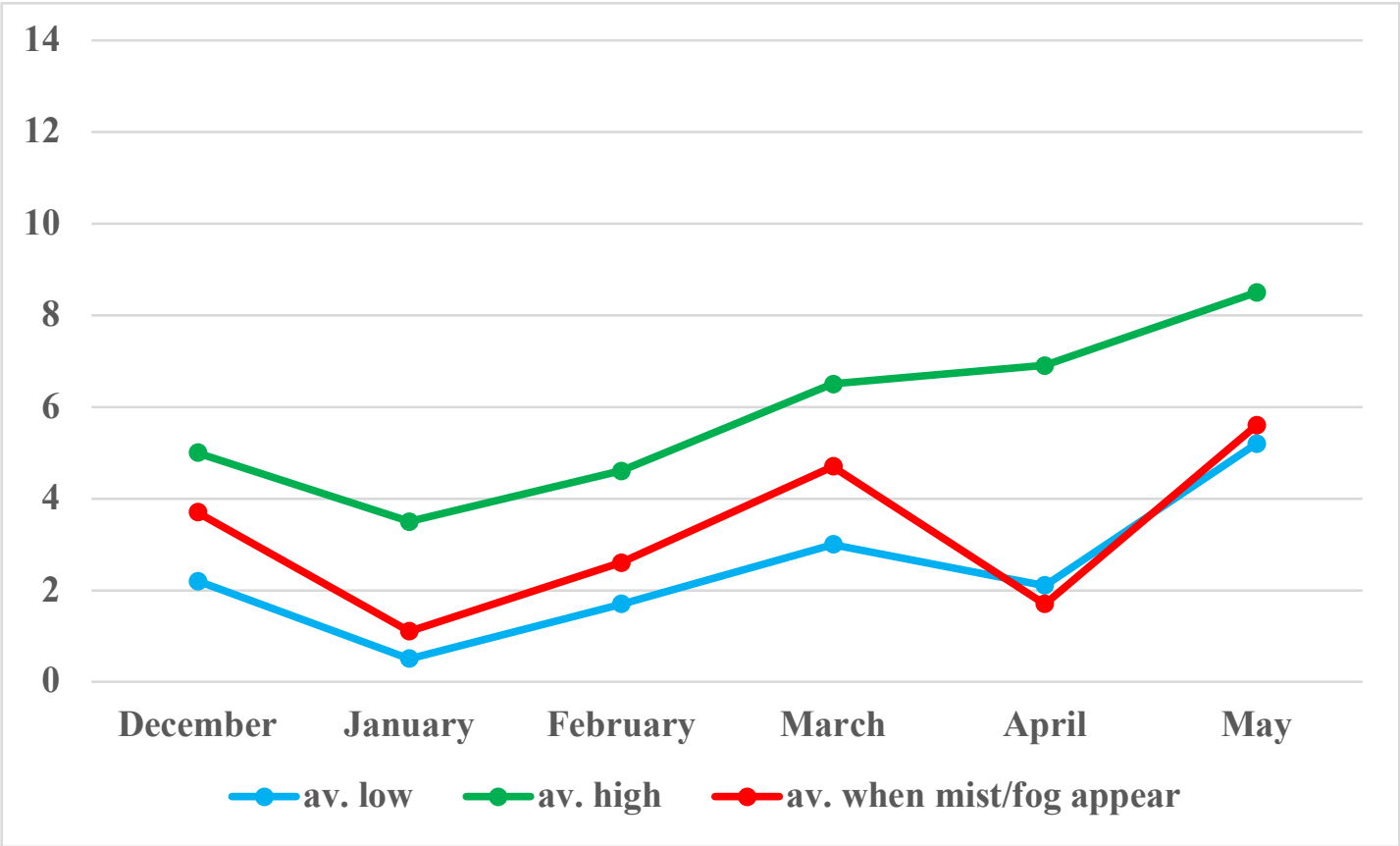
# Temperature: Hatherleigh (Inwardleigh)

	December	January	February	March	April	May
(1) average when mist/fog appear	-0.7 °C	2.7 °C	0.5 °C	7.0 °C	-0.6 °C	3.3 °C
(2) average low	4.1 °C	2.3 °C	3.2 °C	3.2 °C	2.0 °C	6.3 °C
(3) average high	8.5 °C	7.1 °C	8.3 °C	10.7 °C	11.4 °C	13.0 °C
(4) gap: (1) - (2)	-4.8 °C	0.4 °C	-2.7 °C	3.8 °C	-2.6 °C	-3.0 °C



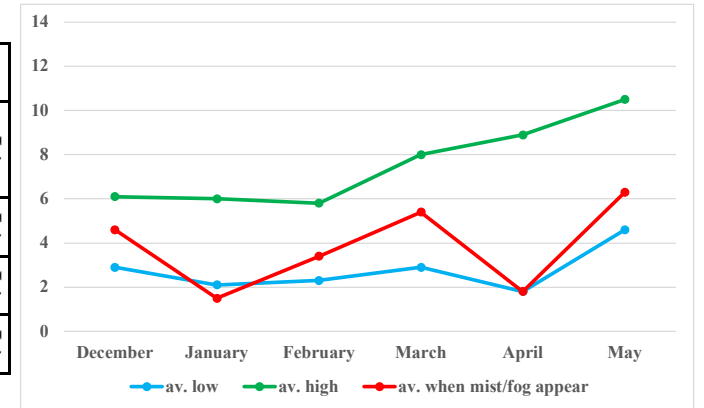
# Temperature: Cosdon Hill

	December	January	February	March	April	May
(1) average when mist/fog appear	3.7 °C	1.1 °C	2.6 °C	4.7 °C	1.7 °C	5.6 °C
(2) average low	2.2 °C	0.5 °C	1.7 °C	3.0 °C	2.1 °C	5.2 °C
(3) average high	5.0 °C	3.5 °C	4.6 °C	6.5 °C	6.9 °C	8.5 °C
(4) gap: (1) - (2)	1.5 °C	0.6 °C	0.9 °C	1.7 °C	-0.4 °C	0.4 °C



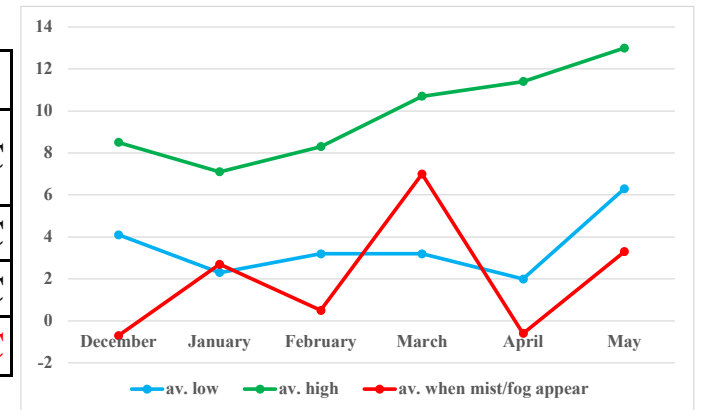
# Temperature: Summary

	December	January	February	March	April	May
(1) average when mist/fog appear	4.6 °C	1.5 °C	3.4 °C	5.4 °C	1.8 °C	6.3 °C
(2) average low	2.9 °C	2.1 °C	2.3 °C	2.9 °C	1.8 °C	4.6 °C
(3) average high	6.1 °C	6.0 °C	5.8 °C	8.0 °C	8.9 °C	10.5 °C
(4) gap: (1) - (2)	1.7 °C	<b>-0.6 °C</b>	1.1 °C	2.5 °C	0.0 °C	1.7 °C



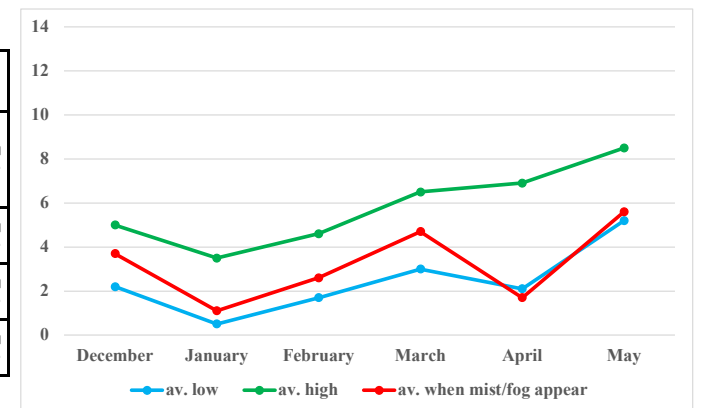
## Okehampton (Misdon)

	December	January	February	March	April	May
(1) average when mist/fog appear	-0.7 °C	2.7 °C	0.5 °C	7.0 °C	-0.6 °C	3.3 °C
(2) average low	4.1 °C	2.3 °C	3.2 °C	3.2 °C	2.0 °C	6.3 °C
(3) average high	8.5 °C	7.1 °C	8.3 °C	10.7 °C	11.4 °C	13.0 °C
(4) gap: (1) - (2)	<b>-4.8 °C</b>	0.4 °C	<b>-2.7 °C</b>	3.8 °C	<b>-2.6 °C</b>	<b>-3.0 °C</b>



## Hatherleigh (Inwardleigh)

	December	January	February	March	April	May
(1) average when mist/fog appear	3.7 °C	1.1 °C	2.6 °C	4.7 °C	1.7 °C	5.6 °C
(2) average low	2.2 °C	0.5 °C	1.7 °C	3.0 °C	2.1 °C	5.2 °C
(3) average high	5.0 °C	3.5 °C	4.6 °C	6.5 °C	6.9 °C	8.5 °C
(4) gap: (1) - (2)	1.5 °C	0.6 °C	0.9 °C	1.7 °C	<b>-0.4 °C</b>	0.4 °C



## Cosdon Hill



## Summary 1/ 3

### 1. Monthly total

#### 1.1

Misdon: 66 days, 277 hours

Inwardleigh: 18 days, 60 hours

Cosdon Hill: 64 days, 311 hours

#### 1.2

Misdon: Jan. > Dec. > Mar. > Feb. > May > Apr.

Inwardleigh: Jan. > May > Feb. > Mar. > Apr. > Dec.

Cosdon Hill: Jan. > Mar. > Dec. > Feb. > Apr. > May

### 2. Hourly total

Misdon, Cosdon Hill: forecast for every hour of the day

Inwardleigh: no forecast for 11:00-15:00, 20:00

**Misdon would be mistier or foggier than Inwardleigh.**

← 1.1 and 2

**Misdon would be closer to Cosdon Hill meteorologically than to Inwardleigh.**

← 1.1, 1.2 and 2

## Summary 2/ 3

### 3. Distribution within a day (3 equal divisions)

Misdon: Early 8 Hrs.=50.2%, Mid 8 Hrs.=24.5%, Late 8 Hrs.=25.3%

Inwardleigh: Early 8 Hrs.=66.7%, Mid 8 Hrs.=15.0%, Late 8 Hrs.=18.3%

Cosdon Hill: Early 8 Hrs.=51.4%, Mid 8 Hrs.=23.5%, Late 8 Hrs.=25.1%

### 4. Distributional patterns within a day (6 types)

Misdon:  $EM > EML > E > L$

Inwardleigh:  $EM > E$

Cosdon Hill:  $EM > E > EML$

**Misdon would be closer to Cosdon Hill meteorologically than to Inwardleigh.**

**← 3 and 4**

**Distributional patterns are the most varied in Misdon and the least varied in Inwardleigh.**

## Summary 3/ 3

### 5. Wind direction

Misdon, Cosdon Hill: mainly from WSW/W-N-E  
Inwardleigh: mainly from SSW-W-NNW

### 6. Wind speed

Misdon, Cosdon Hill: in rather windier condition  
Inwardleigh: in calm/almost windless condition

### 7. Temperature

Misdon, Cosdon Hill: even in warmer condition  
Inwardleigh: in particularly cold condition

#### 2. Hourly total

Misdon, Cosdon Hill: forecast for every hour of the day

Inwardleigh: no forecast for 11:00-15:00, 20:00

## Hypothesis - - - - -

### Misdon, Cosdon Hill:

- northerly wind
- weather fronts
- frontal fog

### Inwardleigh:

- westerly wind
- high pressure system
- radiation fog

## Conclusion

Misdon would be mistier or foggier at least than Inwardleigh.

Misdon seems to be on the fringes of the North Dartmoor climate region.

Misdon might be an English place-name with the first element which represents a distinctive local climate as a result of a deliberate choice and foregrounding of the noun *mist*.





**Thank you very much  
for listening.**

cherry blossoms in  
full bloom, Tokyo